

**CONTEMPORARY VILLAS**

**Bespoke Villas**

**CONTEMPORARY PASSIVE ECOLOGICAL VILLAS**



# WE BELIEVE IN PERFECTION



For more than 20 years, this belief has inspired us to work harder. Today, we can proudly say that we specialise in turning our clients' dreams into a reality.

*Perfection exists*

*It is something you can see and feel*

*It are the villas we build*

We are promoters and builders, with a team of architects, designers and technicians who combine their forces to offer the highest grade of construction, creating the perfect paradise to enjoy the highest quality of life.

Let's not fool ourselves, you want a villa which is a real home for your family, not a copy of someone else's villa and we make a team effort out of the construction process.

Our luxurious single-family villas summarise our clients' tastes and needs, supported by the latest technologies, in a smooth harmony with their impressive avant-garde designs.

All plans, photos and designs here reproduced are the sole property of the developer and cannot be used in any way, copied, sold or transferred to other developers. *Some elements shown on the pictures may be listed as optional.*

1st line golf

Mijas Golf – Las Lagunas - Mijas

3 bedrooms – 3 bathrooms - 2 toilets

Total constructed 353,56 m2 – Plot size 862,00 m2



## CONTENTS

### PLANIMETRY

Location .....	5
Floor plans.....	6-9
Quality specifications .....	10-11
Payment terms .....	12
Pictures exterior & interior .....	13-23

### MATERIAL AND FINISHES

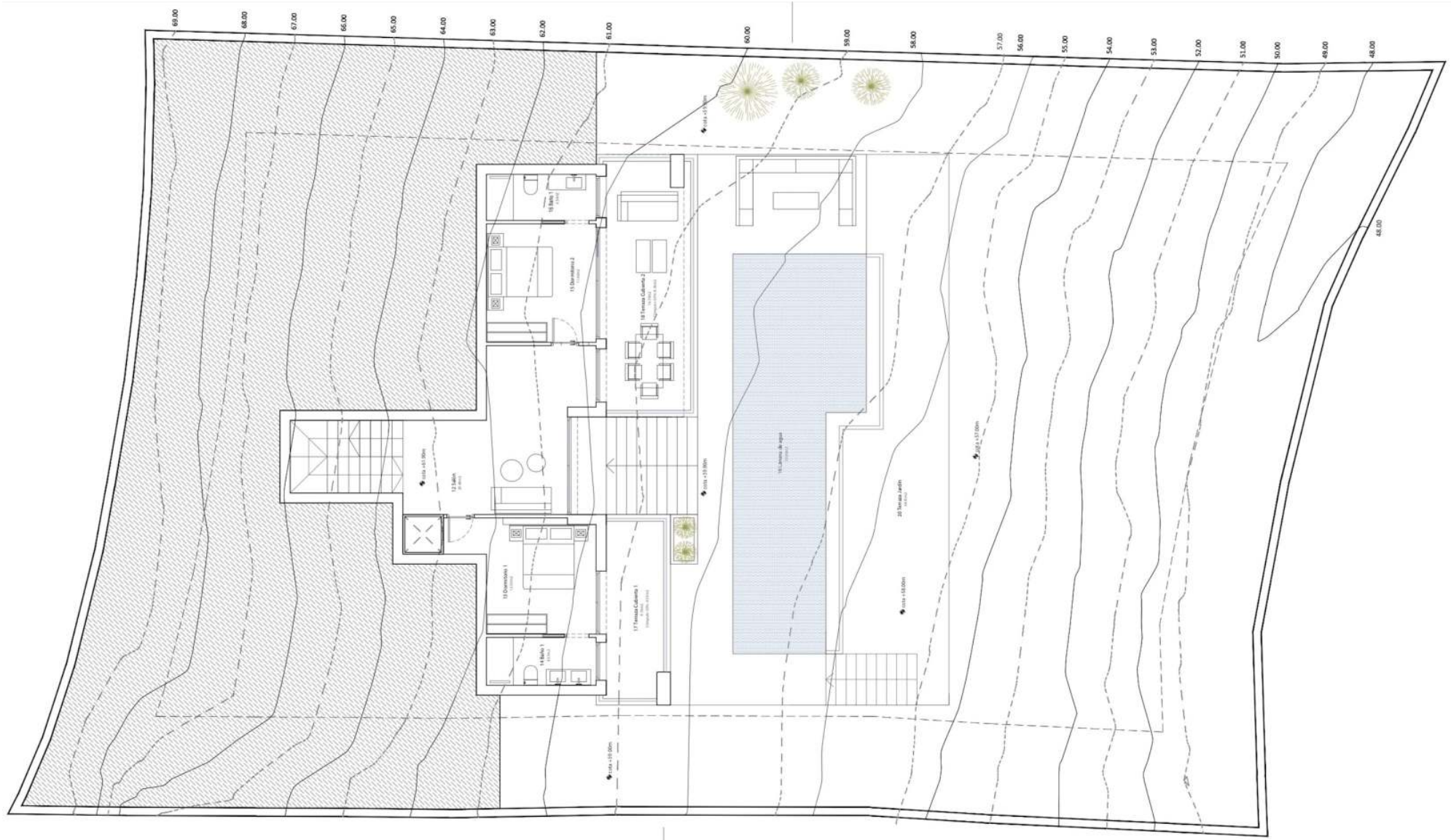
Windows and doors .....	25-27
Ceilings .....	28
Interior floors .....	29
Exterior floors .....	30
Bathroom walls .....	31-33
Bathrooms .....	34-37
Heated pool .....	38
bioKamino chimney .....	39
Dressing & wardrobes .....	40-41
Kitchen .....	42
Appliances .....	43-45
Electric installations .....	46-48
Heating & Cooling .....	49-51
Solar panels .....	52
Railings .....	53
Entrance gates .....	54
Fences .....	55
Smarthome installation .....	56-57



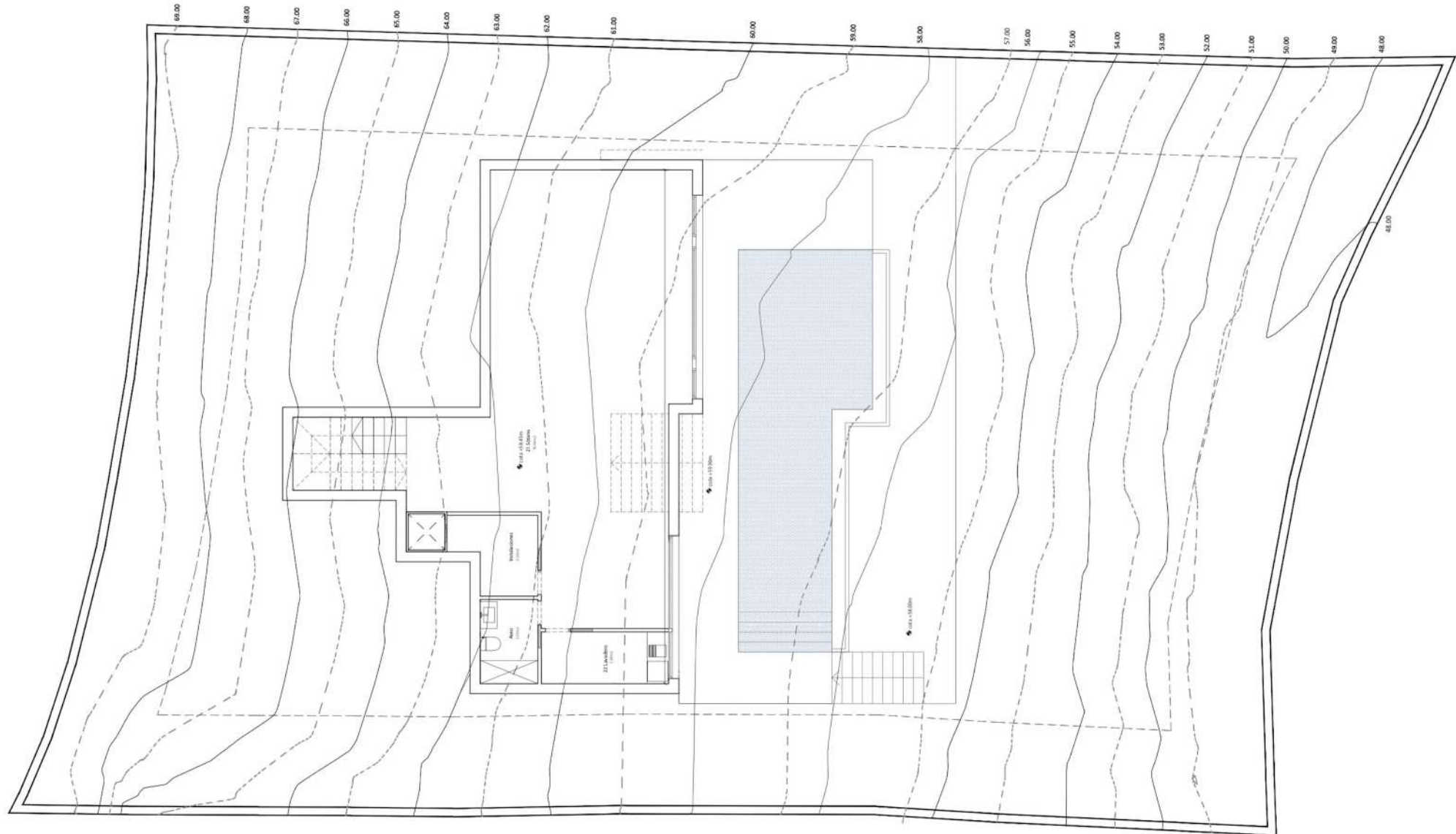




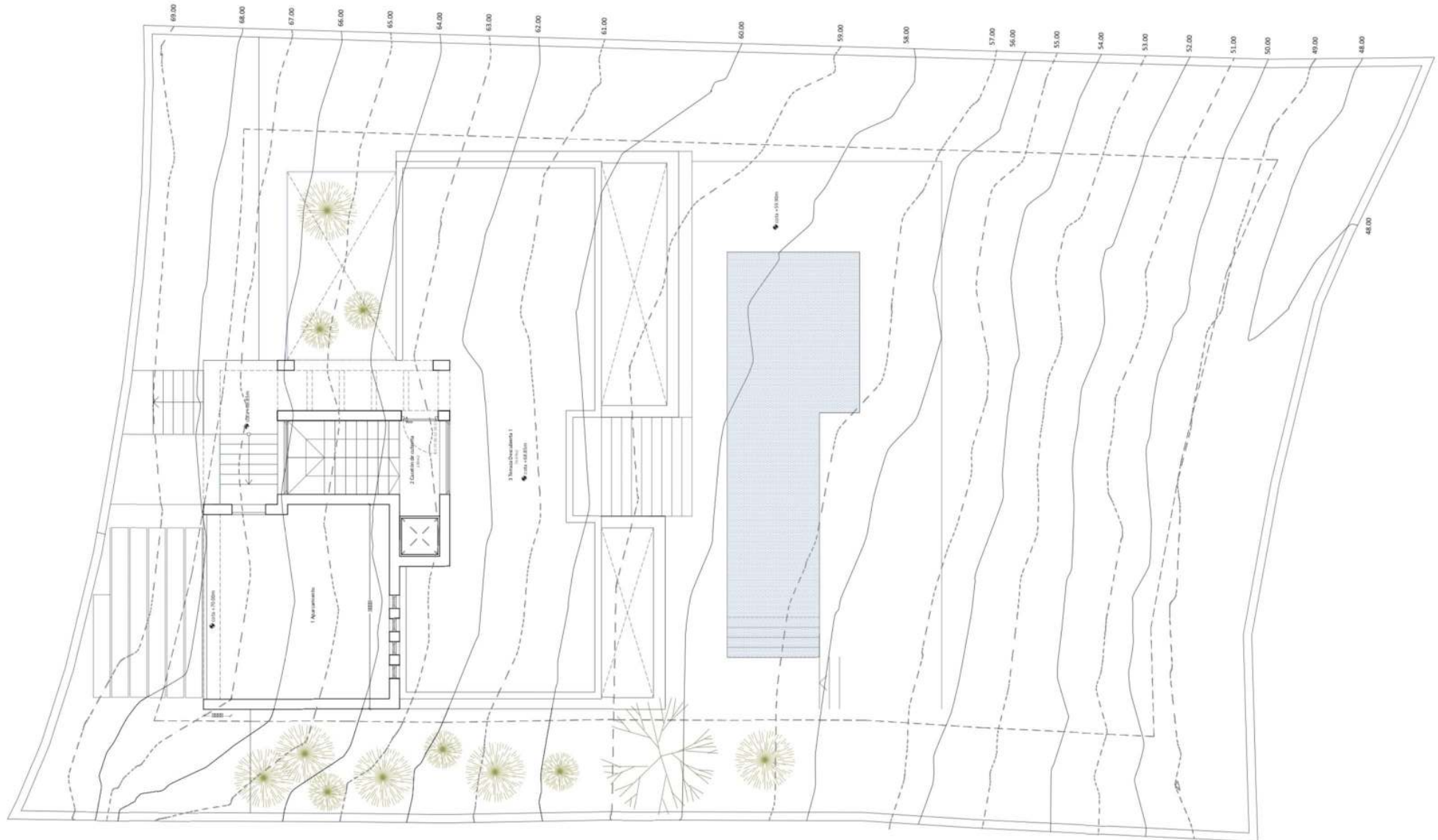












## FOUNDATION – STRUCTURE AN WALLS

- Structural reinforced concrete floor with insulation
- Foundation according to the geotechnical report and bidirectional plates according to European and Spanish regulations
- Structural insulated walls of 35 cm, inside walls with cellular blocks of 25 cm and finished with fine plaster
- Outside walls plastered with Caparol and color of your choice in the plaster

## ROOF AND TERRACES

- Flat inverted roofs that guarantee optimal insulation thermal and tightness and partly transistable
- Insulation and waterproofing in accordance with regulations
- Glass railing, with aluminum profile or stainless steel railing with horizontal rods on the 1st floor

## EXTERNAL WOODWORK

- Premium aluminium joinery and double glazing, with thermal insulation interruption and sound insulation to save energy
- Sliding windows in living rooms, kitchen and bedrooms
- Sliding doors with invisible track on the floor side

## AEROTHERMIA & AIRCONDITIONING

- Mitsubishi or similar with linear diffusers in hall, living/dining room and kitchen and separate remote controls for bedrooms with grilles
- Underfloor heating in full villa from Daikin or similar

## INTERIOR & EXTERIOR DOORS

- White lacquered interior doors size 211,00 cm x 92,50 cm
- Porteline iroko pivot door of 250,00 cm x 128,00

## SWIMMING POOL

- Heated infinity pool with chlorine based water or salt water system
- White or blue vitrified mosaic tiles and outdoor shower from Astralpool

## CUSTOM MADE KITCHEN

- Premium kitchen furniture, doors and drawers with brakes.
- High resistance material worktop from quartz, granite, Silestone to combine with the kitchen cabinets, sink and mixer taps by Hansgrohe®
- Energy-efficient appliances minimum A+ from Bosch including: American refrigerator, steam oven, microwave, ceiling extractor hob, induction, dishwasher and winecooler.

## FLOORS TILES FROM SALONI OR MARAZZI 90 CM X 90 CM

- First quality porcelain stoneware floors from the SALONI® or MARAZZI
- Continuity between the interior floor of the villa and the exterior of the terraces, placed with waterproof adhesive and treated non-slip and exterior protection <https://www.saloni.com/en/product>
- An anti-shock plate is placed under all floors

## BATHROOMS FROM PORCELANOSA

- Bathrooms equipped with furniture
- Porcelain enameled white sanitaryware with water saving mechanisms
- Bathtub in master bathroom all shower with thermostatic rain showers and tempered glass
- Wall mounted toilets toilets
- Towel dryer
- Low flow thermostatic taps from HANSGROHE® or similar in showers and bathrooms
- Built-in sinks or in designer furniture and with mirror.
- Walls in bathrooms with Urbatek (PORCELANOSA) plates 250 x 120 <https://www.porcelanosa.com/uk/bathrooms>

## LIGHTS FROM BPM LIGHTNING AND PHILIPS

- BPM LED downlight In ceilings of; bathrooms, kitchen and hallways
- PHILIPS LED downlights in ceilings of: living/dining area and kitchen



### CHIMNEY FROM BOKAMINO

- Included

### HOME AUTOMATIZATION – DOMOTICA FROM ZENNIO

- Control of blinds, air conditioning and video portero (If applicable)

### PLOT ACCESS GATE

- Motorized entrance gate

### ELECTRICITY AND TELECOMMUNICATIONS

- Villa with a high degree of electrification, which meets the low electrotechnical voltage regulations
- USB charging points and DTT and radio connections in the kitchen, living room living and bedrooms.
- Installation of video intercom
- Indirect lighting in the living space
- Niessen, Tensa, Niko or similar
- Decks and porches with waterproof baseboards

### DRESSING ROOMS AND WARDROBES FROM LAMOIRE OR DAKOR

- Wardrobes: lacquered sliding doors according to interior design with handle finger
- Dressing rooms: no doors

### FINISHES & GARDEN

- Street side: 1.50 m high wall with perforated mesh, frosted glass of 0,50m or lasercut metal
- Division between the plots: rigid fences of 2 meters high
- Easy maintenance with automated irrigation system

### KNC THERMOSTAT

- Included

### ELEVATOR WHEELCHAIR FRIENDLY

- Included

### SOLAR PANELS

- Included 15 x network Connection Kit 5000W 25000Wh day Fronius Single-phase. This is a system of direct self-consumption without batteries, so that through this set of materials we can generate electricity in sunny hours. Does not require maintenance on any of its components and the duration average of these fcomponents is over 20 years.

### EXTRAS

#### PNEUMATIC PANORAMIC ELEVATOR (MAINTENANCE FREE)

- From € 30,000.00

#### PORCELANOSA OR LAGO KITCHEN

- From 35.000,00 €

#### MADAL LINEAR DIFFUSORS

- Price on request

#### WINDOWS FROM SCHUCO

- On request

#### AUTOMATIC POOL COVER OR POOL COVER

- On request, it depends on the size of the pool

#### UNDERFLOOR WET HEATING SYSTEM IN FULL VILLA

- Price on request

#### TOUCH SCREEN FROM ZENNIO - DOMOTICA

- Price on request

1	→	<b>Reservation Fee</b>	20.000,00 €
2	→	<b>Clients purchase the plot</b>	Payment of 283.525,00 € in the Public Notary for the plot
3	→	<b>Sign Turnkey contract clients</b>	Payment of 35.000,00 € what includes; <ul style="list-style-type: none"> <li>* Project in clients name</li> <li>* Movement of earth licenses</li> <li>* Cleaning and preparation of the plot</li> <li>* Topograhly and geological study</li> <li>* 3D Images</li> <li>* Quantity surveyor study</li> <li>* Health and Security study</li> <li>* Technical address</li> </ul>
4	→	<b>Payment of licenses</b>	Licenses will be transferred to the client and client pays 25.000,00 €
4	→	<b>Payment of retention walls</b>	Construction of retention walls with “Piedras de Casares, total payment of 45.000,00 € as followings; 25% on start construction and balance at finishing of the retention walls.
5	→	<b>Start construction</b>	No down payments required, start of construction normally within 10 days of transferring the licenses to the clients name
6	→	<b>Payments against Certification</b>	All construction payments will be made against completed construction demonstrated by the construction certificates issued and signed by the architects and have to be paid within 10 natural days of receiving the invoices.
7	→	<b>Completion</b>	Construction completion time of 6 – 8 months. We will manage the final utility connections and first occupation license.
8	→	<b>Total price VAT PAYMENTS</b>	998.000,00 € - VAT not included 21% on the plot and retaining walls 10% on the construction























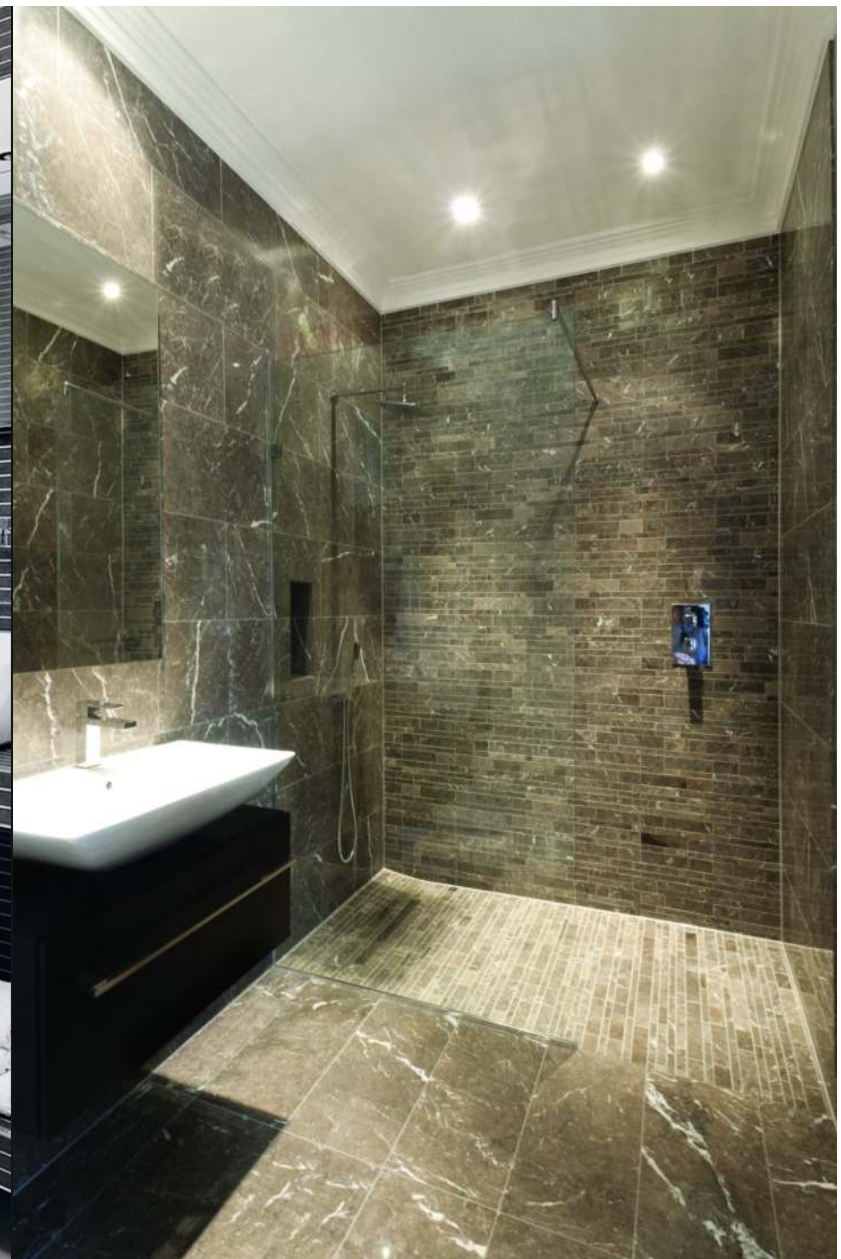








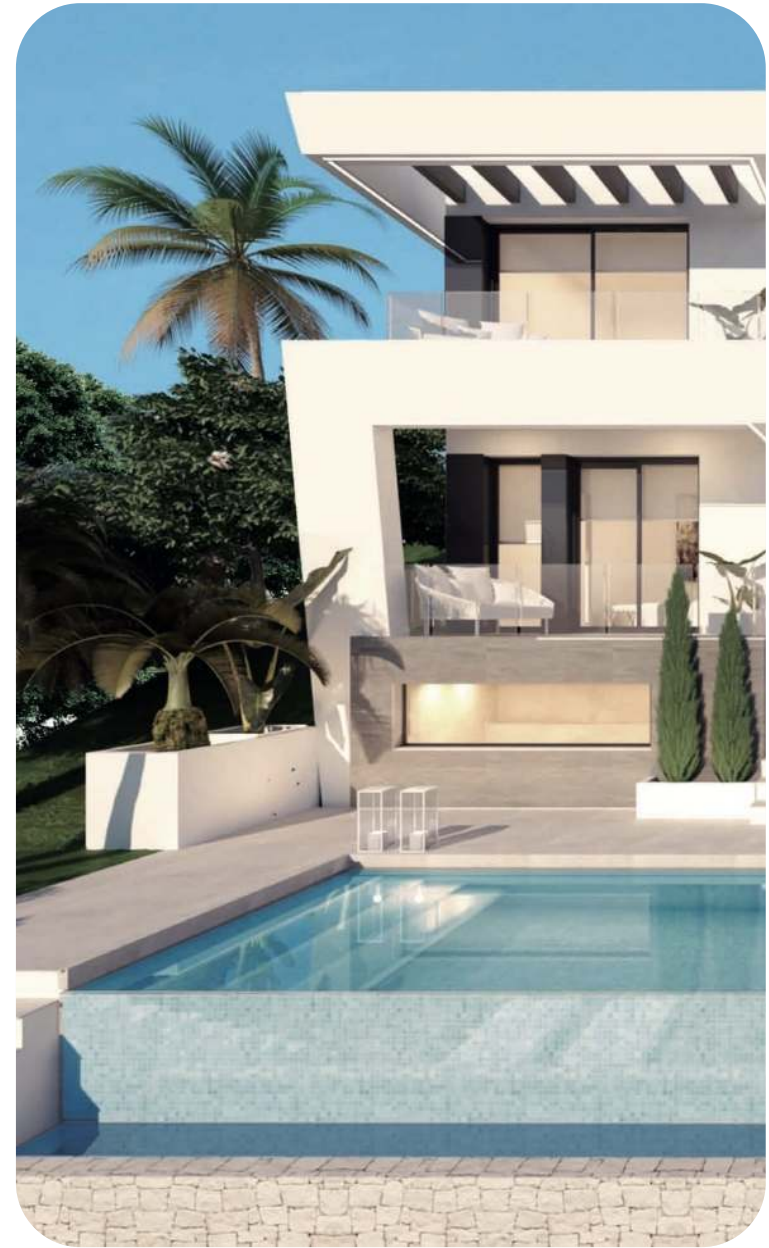








# MATERIALS & FINISHINGS







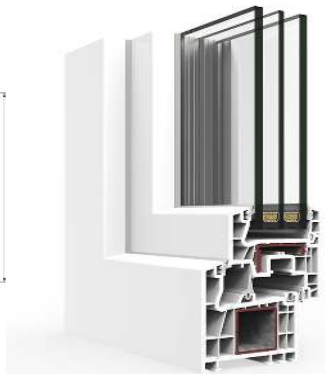
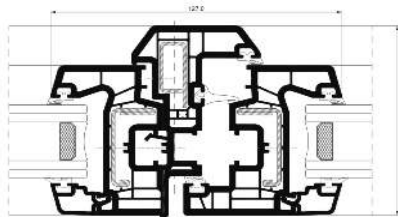
### CORTIZO® PREMIUM QUALITY WINDOWS

Vision Plus sliding - Sliding System

All of our windows building systems are tested in the Testing Laboratory of the Technical Center to guarantee the best performance of watertightness, air permeability and wind resistance, guaranteed by obtaining the maximum results in their test classifications.

### FEATURES PVC & ALUMINIUM

PVC A70 triple glazing



PVC C70 sliding



COR 70 Industrial RTP



COR Vision plus sliding





### PORTELINE®

#### Pivot door

The Porteline pivot front door offers very good thermal insulation. If optional equipment is selected for installation, it can be used as a multi-functional door and integrated into smart home automation and building security.



### FEATURES

Measurements (cm): 250 x 128

Thickness (cm): 7,05

Stainless steel door fittings

Low gloss lacquer

Color: Iroko (other colors available)

Door knob length (cm): chrome 110







### PORTELINE® CUSTOM MADE

White laquered massive wooden doors

The premium massive interior doors offer very good thermal insulation. If optional equipment is selected to be installed, it can be used as a multifunctional door and integrated in smart home automation and building safety.



### FEATURES

Measurements (cm): 211,00 x 92,50

Thickness (cm): 3,5

Stainless steel door fittings

Chrome handle

Low-gloss varnish

Colour: White, black or brown





### PLADUR®

Plasterboard suspended ceiling

These suspended ceilings consist of Pladur® plasterboards screwed to a galvanized steel support structure properly attached to the floor above it.

Like all Pladur® units, their surfaces are finished in a smooth and continuous way, thanks to a special treatment on joints and screws which allows for any type of final decoration.

It includes perimetric curtain tracks with the possibility of incorporating LED light lines.



## FEATURES

Color: Front - light gray - Back - brown (kraft)

Thickness (mm): 15

Integrated curtain track



LED lightS







SALONI®

B-Stone series 90 cm x 90 cm

B-Stone is complemented by three decorative reliefs inspired by the natural stone's own finish, such as ridges and carvings, together with a geometrical micro-texture, and they are all able to adapt to any space, as any ideal complement would do to a suit.

**SALONI**

### FEATURES

Measurements (cm): 90 x 90

Thickness (cm): 1,03

Colour: see color chart

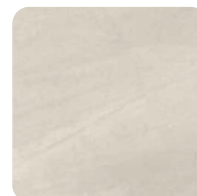
Finish: mat

Reference: B-Stone

Use: intense interior

Product type: Saloni

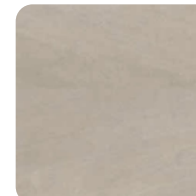
Petalava marphil



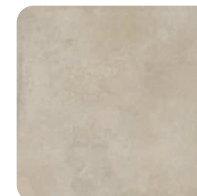
Petalava grey



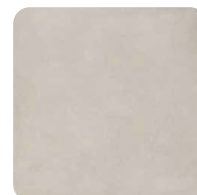
Petalava Arena



Majestic beige



Majestic ash



Grey



Graphite



Ashgrey





SALONI®

B-Stone series anti-slip tiles 90 cm x 90 cm

B-Stone is complemented by three decorative reliefs inspired by the natural stone's own finish, such as ridges and carvings, together with a geometrical micro-texture, and they are all able to adapt to any space, as any ideal complement would do to a suit.

**SALONI**

## FEATURES

Measurements (cm): 90 x 90

Thickness (cm): 1,03

Colour: see color chart

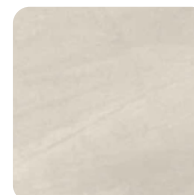
Finish: mat

Reference: B-Stone

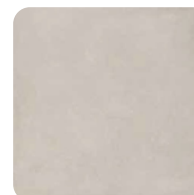
Use: intense exterior anti-slip

Product type: Saloni

Petalava marphil



Majestic ash



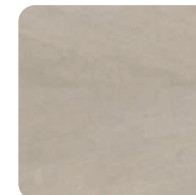
Petalava grey



Grey



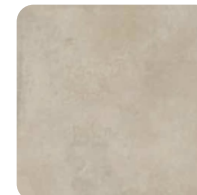
Petalava Arena



Graphite



Majestic beige



Ashgrey





# MATERIALS & FINISHINGS

## BATHROOM WALLS



### PORCELANOSA URBATEK® X-Light

URBATEK gathers a PRIME selection of collections that combines smaller and larger formats with the incorporation of an exclusive variety of marbles and a careful palette of cements. Surfaces for large projects that give shape to any sketch.

The advantage of these X-Light wall plates is that you have almost no joints through their size 120 cm wide and 250 cm high, so you only have botched up joint every 120 cm.

Many other tiles and colours available what can be presented.



### FEATURES

Measurements (cm): 120 x 250

Thickness (cm): 0,9

Colour: see color chart (more colours available)

Finish: mat or glossy

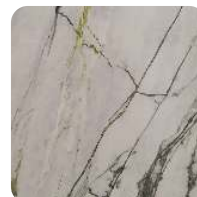
Reference: X-Light

Use: intense interior anti-slip

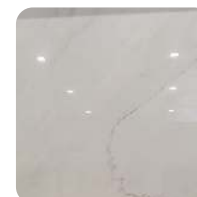
Stark Grey Nature



Organic Green-White



Lush Polished White



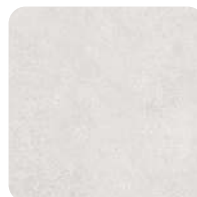
Fiori di Bosco



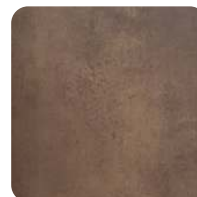
Age Clay Nature



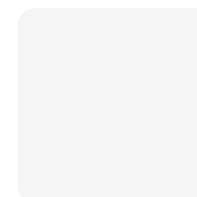
Stark white nature



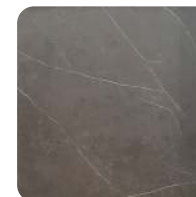
Oxide Brown Nature



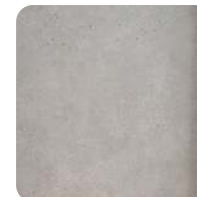
Moon white Polished



Liem Dark Nature



Bottega Acero



## MATERIALS & FINISHINGS

### BATHROOM WALLS



PORCELANOSA®  
Bathroom wall tiles large size

These concrete effect tiles for an industrial look add a touch of sobriety to design projects. Lightweight and smooth, they are ideal for shower stalls and terraces.

Their neutral tones create visual and spacial continuity, making them a perfect choice for decorating living rooms and large spaces.

Many other tiles and colours available what can be presented .



#### FEATURES

Measurements (cm): 45 x 120

Thickness (cm): 1,01

Colour: see color chart (more colours available)

Finish: mat or glossy

Reference: mono porosa

Use: wall tiles bathrooms

Twin Bottega Acero



Bottega White



Bottega Caliza



Bottega Antracita



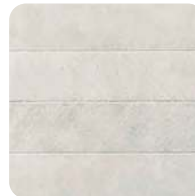
Bottega Acero



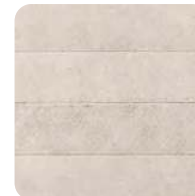
Twin Bottega Caliza



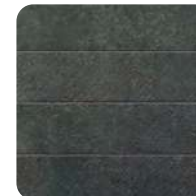
Sp. Bottega White



Sp. Bottega Caliza



Sp. Bottega Antracita



Sp. Bottega Acero





## MATERIALS & FINISHINGS

### BATHROOM WALLS



PORCELANOSA®  
Bathroom wall tiles

These concrete effect tiles for an industrial look add a touch of sobriety to design projects. Lightweight and smooth, they are ideal for shower stalls and terraces.

Their neutral tones create visual and spacial continuity, making them a perfect choice for decorating living rooms and large spaces.

Many other tiles and colours available what can presented to.



#### FEATURES

Measurements (cm): 31,60 x 90

Thickness (cm): 0,90

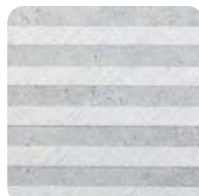
Colour: see color chart (more colours available)

Finish: mat or shiny

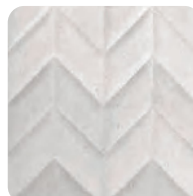
Reference: monoporosa

Use: wall tiles bathrooms

Belice Acero



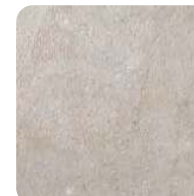
Dover Spiga Caliza



Dover Caliza



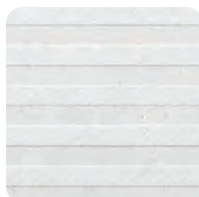
Dover Arena



Dover Acero



Belice Caliza



Dover Antique



Dover Modern Caliza



Dover Modern Arena



Dover Modern Acero





### CUSTOM MADE WASHBASSINS®

Washbasins Krion Ras

Trend-setting sinks.

The washbasins have gone from being a complement to one of the fundamental pieces of the bathroom. This evolution of the concept has allowed the development of new formats and designs with elegance as a priority.

## FEATURES

Measurements (cm): 1100 x 540

Type: wall mounted

Colour: dark cream – other colours available







Master bathroom taps

PORCELANOSA®

Noken low-flow washbasin taps

**Master bathroom:** Single-lever basin mixer with Ø28 mm ceramic cartridge. 3/8" connections, a length of the hoses of 512 mm, with automatic drain and without aerator. Cascading water fall. The flow rate at 3 bar is 7.85 l / min.

**Bathrooms:** Single-lever basin mixer with Ø35 mm ceramic cartridge, 3/8" connections, a length of 370 mm. Hoses, with automatic drain and" plus "aerator. The flow rate at 3 bar is 12.01l / min.



### FEATURES

Type master bathroom: Imagine

Type bathroom: Acron

Colour: chrome

Characteristics: single-lever

Bathroom taps





#### ROCA® THE GAP

Wall-hung toilet with horizontal outlet

This bathroom collection is based on minimal forms that fit perfectly, and responds to the challenges posed by current interior solution. It provides functional benefits without compromising design.

It includes:

- Chrome flush plate
- - Compact seat and lid with cushioned closure

#### FEATURES

Back to wall

Installation type: wall-hung

Outlet type: horizontal

Product type: GAP

Length: 540

Width: 360

Height: 495







Master bathroom shower column

PORCELANOSA®  
Thermostatic rain showers

**Master bathroom:** Thermostatic shower column with built-in wax thermoelement and satin stainless steel frame. Integrated shower head, hand shower holder fixed to the column or on the wall, hand shower, additional "JOY" hand shower and integrated jet for the lower back. With 1/2 "connections and with a distance of 150mm between them. Includes non-return valve and safety stop at 38°. The flow rate at 3 bars of the hand shower is 9.2l / min, of the nozzle 12l / min and of the 15l / min jets.

**Bathrooms:** Thermostatic shower column with built-in wax thermoelement. Contains shower head, shower bar with sliding hand shower bracket, hand shower and additional "JOY" hand shower. 1/2 "connections at a distance of 150 ± 15mm between them. Includes a non-return valve and safety stop at 38°. The flow rate at 3 bars from the hand shower is 6.8l / min and from the sprinkler 7.4l / min.

#### FEATURES

- Complete shower sets
- Thermostatic tap fittings
- Overhead rain showers
- Flexible shower hose
- Hand shower
- Hand shower holder

Shower columns



## MATERIALS & FINISHINGS

### HEATED POOL WITH OUTDOOR SHOWER



#### HEATED POOL

Thermostatic rain shower from ASTRALPOOL®

Shower Iguazu is a new model of shower for swimming pools and gardens of the manufacturer AstralPool. Made of stainless steel AISI-316 matt, incorporates a white front trim in acrylic material. Square overhead sprayer in antical chromed brass, 2 frontal jets with nebulizer effect controlled by a 2-way reversing valve.

Flow and water temperature are regulated by a mixing valve.

Design, quality and functionality come together in this exclusive shower model.

Among its high performance highlights the nebulization effect, which allows to be covered by a refreshing cloud of water spray as an independent option to its powerful shower flow.

It is part of the AstralPool Signature range, the AstralPool Premium range of products for swimming pools (3 years warranty).



#### FEATURES

Constructed in satin stainless steel AISI-316

Embellisher Solid surface

1 spray chrome plated brass.

1 flow valve + temperature with selector 2 exits,

Jets massages + nebulizer

Water connection 1/2 "BSP INT.

Neutral packaging with personalized label

Personalized instruction manual

Height of the sprinkler to the ground 2 m

Chrome finish





BIOKAMINO®  
Wall fireplaces - leonardo

With its geometrical and original style, Leonardo is a wall bio fireplace, perfect to give a touch of elegance and warmth to the surrounding furniture.

The sensation of a pure and authentic flame combined with the italian style of bioKamino, Raffaello will captivate guests and masters of the house.  
It's provided with bioKamino burner, extremely safe and ecological.



## FEATURES

Measurements (cm): 130 x 68

Type: BK1368

Colours: white, chrome, aluminium grey, bordeaux

Consumption: 0,27 l/h

Power. 2 kw

Weight: 22 kg



Chrome finish







### LARMARIO® CUSTOM MADE

Custom wardrobes and dressings

Rectangular pieces that are linked to mix and harmonize colors and materials, forming a collage that makes this a very special door.

- New generation door fittings allow a smooth closure.
- Adjustable leveling systems to set up completely-removable cabinets or drawer guides to make the most of the space.
- High-density melamine interior.



## FEATURES

Measurements (cm): 300 x 70

Type: Elegant, other types available

Colours: clients choice

Different styles and colours available





#### LARMARIO® CUSTOM MADE

Custom dressings and wardrobes

The dressing room can be the room in the home that brings the greatest pleasure to a person who is passionate about fashion, clothing and trends. This intimate place allows us to establish a certain order in our wardrobe to feel more comfortable when choosing the right garment.

We have extensive experience when designing and planning projects with custom dressing rooms. We also have multiple devices for the reorganization and placement of specific elements, this is what we call accessories.



#### FEATURES

Measurements (cm): 300 x 70

Type: Elegant

Colour: dark grey, White, beige

Different colours available





### PREMIUM QUALITY KITCHEN®

Custom made kitchen

This kitchen includes:

- Great storage space with integrated home appliances. High density four faced laminated doors with melamine resin coating.
- A central island equipped with an induction cooker, sink and a large amount of storage space.

### FEATURES

Measurements (cm):

Island measurements (cm):

Counter material: Silestone, quarts or granite

Doors: colour to choose

Kitchen tap: Simple Touch Pull Down kitchen mixer tap with dual function single handle black & gold solid brass

Multiple finishes available







BOSCH® A+ minimum  
Premium appliances

Bosch Home Appliances is dedicated to providing intelligent, reliable, and appealing solutions to make life a bit easier every day.

This underscores Bosch's ambition to create technology that always serves a purpose: our products are there whenever people need them, and harmonize with the home environment when they're not — always supportive, never obtrusive.

Also available SIEMENS or MIELE appliances



Induction HOB A+++  
Ref: PXY675DC1E

Steam oven A+++  
Ref: HBG635NS1

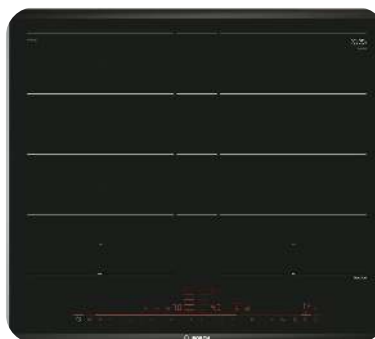
American refrigerator A++  
Ref: KAN93VIFP

## FEATURES

**American refrigerator:** 177 cm x 91 cm - No Frost American refrigerator with ice and water dispenser: cold water and ice at the touch of a button - Very efficient.

**Steam oven:** 60 cm - Control with TFT display: very easy to use thanks to its central control ring and all the functionalities with texts and symbols in color.

**Induction HOB:** 60 cm - Induction: fast, safe, clean and very efficient.





BOSCH® A+ minimum  
Premium appliances

Bosch Home Appliances is dedicated to providing intelligent, reliable, and appealing solutions to make life a bit easier every day.

This underscores Bosch's ambition to create technology that always serves a purpose: our products are there whenever people need them, and harmonize with the home environment when they're not — always supportive, never obtrusive.

Also available SIEMENS or MIELE appliances



Extractor fan A+++  
Ref: DRC99PS20

Microwave A++  
Ref: BEL634GS1

Dishwasher A++  
Ref: SMV46NX03E

## FEATURES

**Dishwasher:** integrated - 60 cm - Drying system with Zeolites® - 8 programs: Intensive 70 ° C, automatic 45-65 ° C, ECO 50 ° C, quiet program 50 ° C, cups 40 ° C, 1 hour 65 ° C, fast 30 min 45 and prewash

**Microwave:** EcoSilence motor: super efficient and quiet. InfoLight: projection of light onto the floor to indicate whether the dishwasher is running or not. Automatic program

**Extractor hood:** 60 cm - finished in white glass with remote control



BOSCH® A+ minimum  
Premium appliances



Bosch Home Appliances is dedicated to providing intelligent, reliable, and appealing solutions to make life a bit easier every day.

This underscores Bosch's ambition to create technology that always serves a purpose: our products are there whenever people need them, and harmonize with the home environment when they're not — always supportive, never obtrusive.

Also available SIEMENS or MIELE appliances



Wine cooler A++  
KSW38940

Washing machine A+++  
Ref: WAU28PHXES

## FEATURES

**Washing machine:** Home Professional range with i-DOS intelligent self-dosing of detergent and fabric softener, 4D Wash System and Home Connect for the most effective and efficient washing

**Wine cooler:** Nominal capacity in number of standard bottles of 0.75 liters 197  
Built-in appliance: no







NIESSEN®  
Zenit Line switches & plugs

Zenit is the most complete line for all types of residential and tertiary installations. An appreciated design and a beautiful finishing line that adds value to the installations, with advanced features that add comfort and a high level of performance.

Three types of finishes are offered: white, silver and anthracite.

**NIESSEN**

### FEATURES

#### Switches

Intensity (A): 16  
Voltage (V): 250  
Optional LED lightning

The security system on the plugs prevents that you would have unintentional direct contact

TV installation

Threaded connecor

#### Plugs

Intensity (A): 16  
Voltage (A): 250

White



Silver



Anthracite





PHILIPS®

Livingroom, dining room and kitchen

The Philips Slim Ledinaire 11W DN065B LED Downlight is an option for general lighting in large spaces because it has excellent properties.

It incorporates high-performance Philips brand components with high efficiency. The Philips Slim Ledinaire 11W DN065B LED Downlight has a design that allows a very homogeneous distribution of light at an opening angle of 90°. Includes an opal diffuser that helps reduce glare.



#### FEATURES

Power: 11W

Brightness: 1000 lm

Energy class: A+

Dimensions: 174 mm x 34 mm

Colour: white

Frequency: 50.60 Hz

Luminous efficiency: 90 lm / W





BPM LIGHTNING®  
Bedrooms and bathrooms

Mini Catli round recessed lighting for bathrooms, bedrooms and hall, made of aluminum.

It has a tiltable and swiveling light system. The ease of installation and lamp change is remarkable. Suitable for LED lamps (including lamp holder GU10).



#### FEATURES

- With remote controls
- Striped finishes aluminum
- Black aluminum bracket 3053/4210
- White / Gold / Brushed aluminum
- LED lamp 10w 3000k / 4000k



Brushed aluminium





MADEL®

LOOK hidden linear diffusers & LSD Sectored linear slot diffusers & LRT linear diffusers  
Living / dining, hall and Kitchen

The **LOOK** hidden linear diffusers are designed to combine the aesthetics with the technical performance. They can be mounted in false ceilings hiding the frame with filler and leaving visible only the slot. They allow the formation of diffuser continuous lines, with active and inactive areas, without breaking the uniformity of the whole.

The **LSD** series linear diffusers are designed to combine the aesthetics with the technical performance. They can be mounted in false ceilings or suspended from the ceiling. They allow the formation of diffuser continuous lines, with active and inactive areas, without breaking the uniformity of the whole.  
They are suitable both for supply and return.

**MADEL®**

### FEATURES

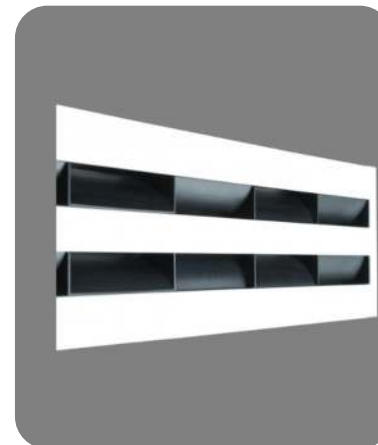
#### LRT linear diffusers LNG for air return

The LRT series linear diffusers are designed to combine the aesthetics with the technical performance. Linear slot diffuser with directional blades for air return, removable without tools by pressing on the invisible PUSH fastener.

LRT linear diffuser

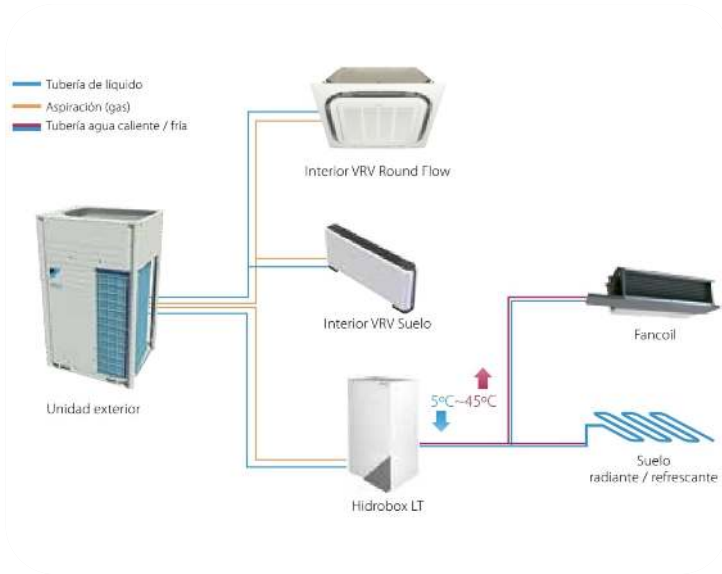


LSD Sectored linear diffuser



Hidden linear diffuser





DAIKIN®

HIDROBOX Interior unit

Underfloor heating in bathrooms

The Daikin VRV Hydrobox HXY125A8 interior unit, with 12.5 kW of power, is ideal for the heating and cooling of high-performance spaces, with a wide range of applications, such as hot or cold water in underfloor, air handling units, low temperature radiators, etc. Fully integrated water-side components save time on system design.

The high temperature hydrobox offers air-to-water connection to VRV Heat Recovery and is ideal for applications such as bathrooms, sinks, under floor heating, radiators and air handling units.



### FEATURES

Power (Kw): 12.5

Type: Interior Unit

Energy Efficiency: A

Interior Unit Noise Level: 44db

Measurements (mm):

Height: 890

Width: 480

Depth: 344

Mod. HXY125A8





### DAIKIN® UNDERFLOOR HEATING SYSTEM

A-rated Grundfos UPM3 automatic pump with low energy consumption and high efficiency

Professional quality 5-layer PEX-AL-PEX pipe - WRAS approved

Digital programmable thermostat - can be upgraded to app control or wireless system

5-layer aluminum core, PEX-AL-PEX pipe

Heatmiser Digital Programmable Thermostat - 7 days

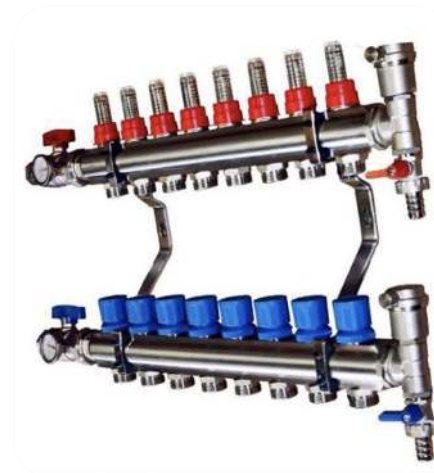


### FEATURES

Total space heating for all general areas (pipe distance 200 mm) up to 300.00 m<sup>2</sup>

Heatmiser Touchscreen - Touch V "(white or carbon)

PEX-AL-PEX pipe is manufactured to the highest standards and outperforms older Pert-Al-Pert, PEXa and PEXb pipes in every respect







FRONIUS®

Network connection kit 5000W 25000Whdia Fronius Single phase

The Network Connection Kit 5000W 25000Whdia Fronius Monofasig is a system for direct self-consumption without batteries, so that we can generate this set of materials electricity in the hours of sunshine. They are the systems with the best depreciation in the solar energy sector, with an average depreciation between 4 and 6 years, depending on the situation and the type of installation.

This type of installation is highly recommended when consumption is made during the day, it is generated when the system is powered up. The system requires no maintenance of any of the components and the average life of these installations is more than 20 years.



### FEATURES

15 x Solar Panel 340W at 24V Polycrystalline: This ERA brand panel is one of the most powerful panels in the 24V polycrystalline range, it is most used for medium and large installations

1x Fronius Primo 5kW single-phase inverter: It is a single-phase grid connection inverter from the Austrian manufacturer Fronius

1x single-phase smart meter. It is an energy meter from the Fronius brand itself. This system can be configured to dynamically control power





PREMIUM®CUSTOM MADE  
Glass or steel rails

The outdoor railings are specially designed to be exposed to inclement weather. It is for all this that the materials used are basically stainless steel, glass and tropical woods suitable for inclement weather.

### FEATURES

Measurements for terraces (cm): 100

Measurements for on top of street wall (cm): 0,50

Tipo: frosted glass or clear glass

Tipo: stainless steel railing with vertical rods



## MATERIALS & FINISHINGS

### AUTOMATIC ENTRANCE GATE



PREMIUM®CUSTOM MADE

Sliding entrance gate from metal perforated sheet

Sliding gate with 2 remote controls, dark grey oxiron colour

#### FEATURES

Measurements entrance gate (cm): 4,00 x 2,00

Measurements pedestrian door (cm): 2,00 x 1,00

Other models and colours available







PREMIUM®  
Rigid fences

Complete metal fences, rigid electro-welded meshes, with posts and clamps to cover the desired perimeter of the plot.

### FEATURES

Measurements (cm): 2,00 meters high

Colour: - white RAL 9010  
- green RAL 6005  
- galvanised





ZENNIO®  
Square TMD-display

5-button capacitive panel and upper graphic display with thermostat

The Square TMD-Display is a capacitive room controller with 5 multifunction buttons and 1.8" backlit frame, totally customizable to cause the desired aesthetic impression in any ambience. Everyone can create unique compositions, which could include images, icons, texts or logos. This customization is printed on a high-strength tempered glass with a high-quality PC-ABS frame.

The Square TMD-Display allows selecting the function for each of its buttons and indicators shown in the display. TMD also includes a thermostat function, internal temperature sensor, and two analog/digital inputs.

**Zennio**  
Passion for KNX innovation

### FEATURES

- Completely customized image for printout glass
- 1.8" Backlit display (128 x 64 pixels)
- 5 touch áreas - 2 Analog/digital inputs
- No power supply different from the bus needed
- Temperature sensor
- State LED indicators with custom luminosity
- KNX BCU integrate
- Magnetic fit with security mechanism to avoid Accidental removal
- metallic stand included
- Complete data saving in case of power failure





ZENNIO®

Z70 Com - 7" capacitive touch screen

The Z70 COM is a color capacitive touch panel with 7" display, including the built-in Zennio Getface IP Video Intercom System. Complying with minimalist aesthetics, it provides total control in smart homes and complete communication with the video intercom, including microphone and loudspeakers. The built-in proximity sensor makes the screensaver appear when the touch panel is not being used and the luminosity sensor adjust the brightness automatically. It is possible to control it remotely from smartphones and tablets with the free mobile app. Z70 COM incorporates an internal temperature sensor, thermostat, and 4 analog-digital inputs. It includes a USB port for configuration download and an Ethernet port. Plug&Play System without additional configurations.

Accessories: temperature and motion sensors.

**Zennio**  
Passion for KNX innovation

### FEATURES

- 16 Million Colour LCD display
- Up To 12 free configuration pages
- Up To 96 control functions
- Video intercom functionality controlling up to 3 doors
- 2 independent thermostats
- Customizable device orientation
- Built-in temperature sensor
- Synchronizable clock with NTP
- BCU KNX integrated - Mini-USB connection
- Magnetic anchoring







ARCHITECTS - DEVELOPERS - CONSTRUCTORS by Eco Building Solutions