

CONTEMPORARY VILLAS

Bespoke Villas



For more than 20 years, this belief has inspired us to work harder. Today, we can proudly say that we specialise in turning our clients' dreams into a reality.

Perfection exists

We are promoters and builders, with a team of architects, designers and technicians who combine their forces to offer the highest grade of construction, creating the perfect paradise to enjoy the highest quality of life.

It is something you can see and feel

Let's not fool ourselves, you want a villa which is a real home for your family, not a copy of someone else's villa and we make a team effort out of the construction process.

It are the villas we build

Our luxurious single-family villas summarise our clients' tastes and needs, supported by the latest technologies, in a smooth harmony with their impressive avant-garde designs.

All plans, photos and designs here reproduced are the sole property of the developer and cannot be used in any way, copied, sold or transferred to other developers. Some elements shown on the pictures may be listed as optional.

La Cala Golf Villa 301



CONTENTS

PLANIMETRY

Location5
Full ground floor6
Ground floor 7
First floor..... 8
Basement/garaje 9
Quality specifications10-11
Payment terms12

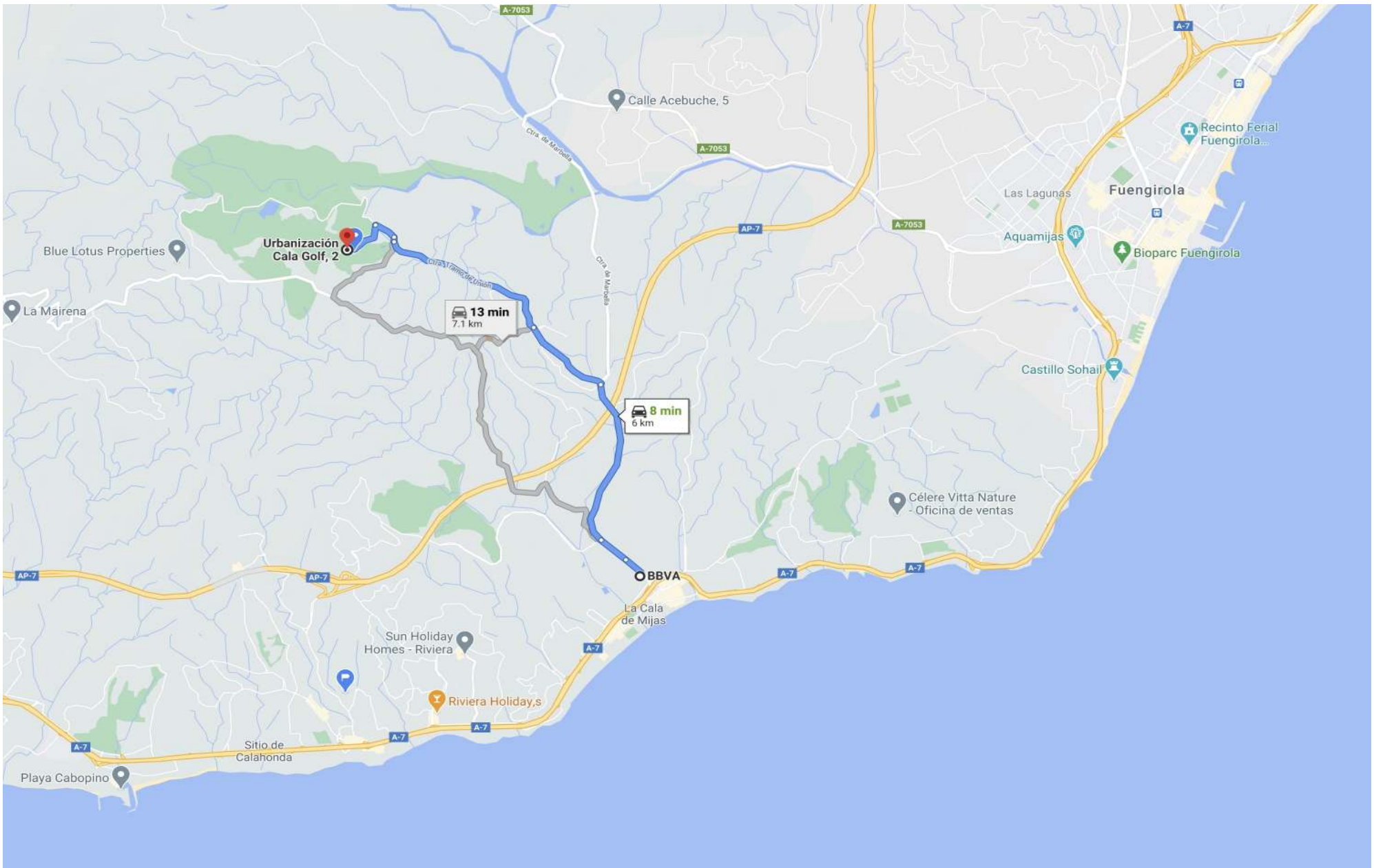
Pictures

Exterior & interior.....13-18

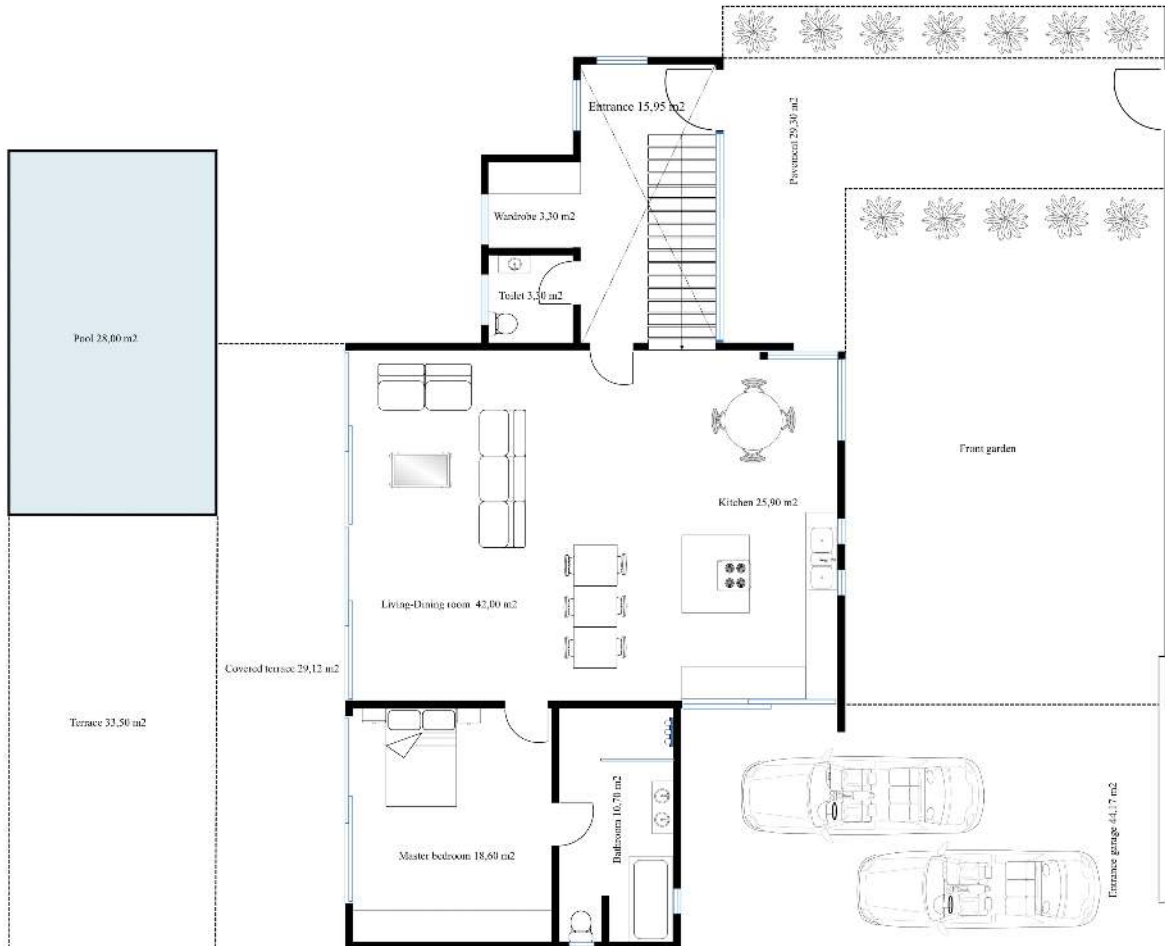
MATERIAL AND FINISHES

Windows and doors 20-23
Ceilings24
Interior floors25
Exterior floors26
Bathrooms27-33
Heated pool34
bioKamino chimney 35
Dressing & wardrobes36-37
Kitchen38
Appliances39-41
Electric installations 42-44
Heating & Cooling45-46
Smarthome installation47-48



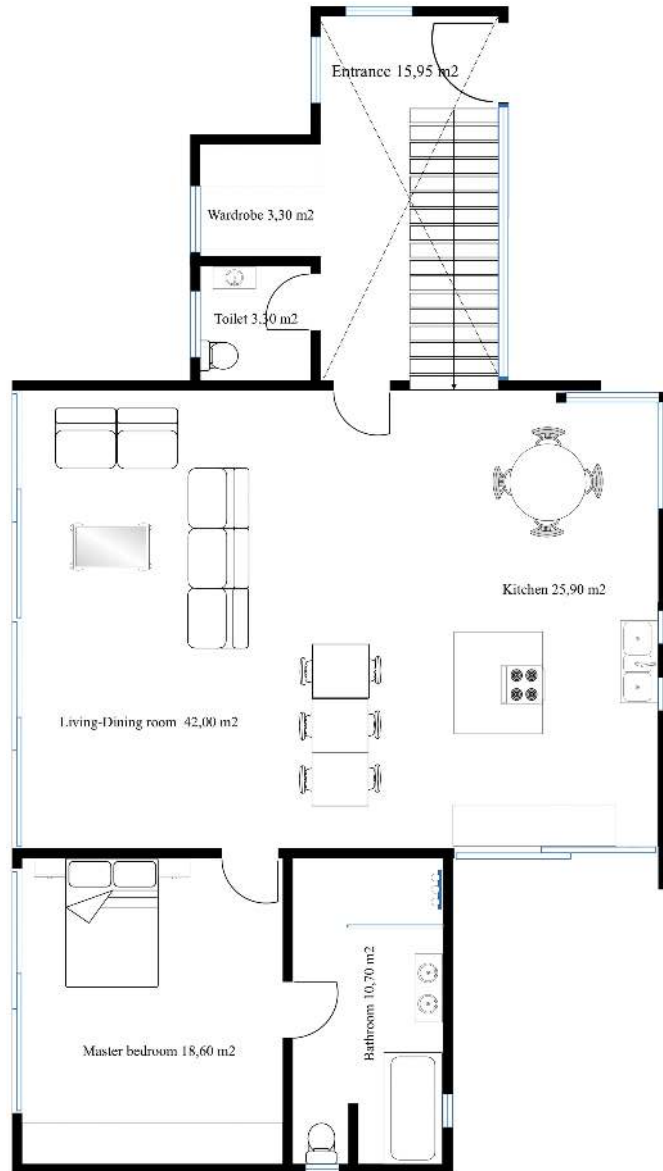


Planimetry Full ground floor villa 301



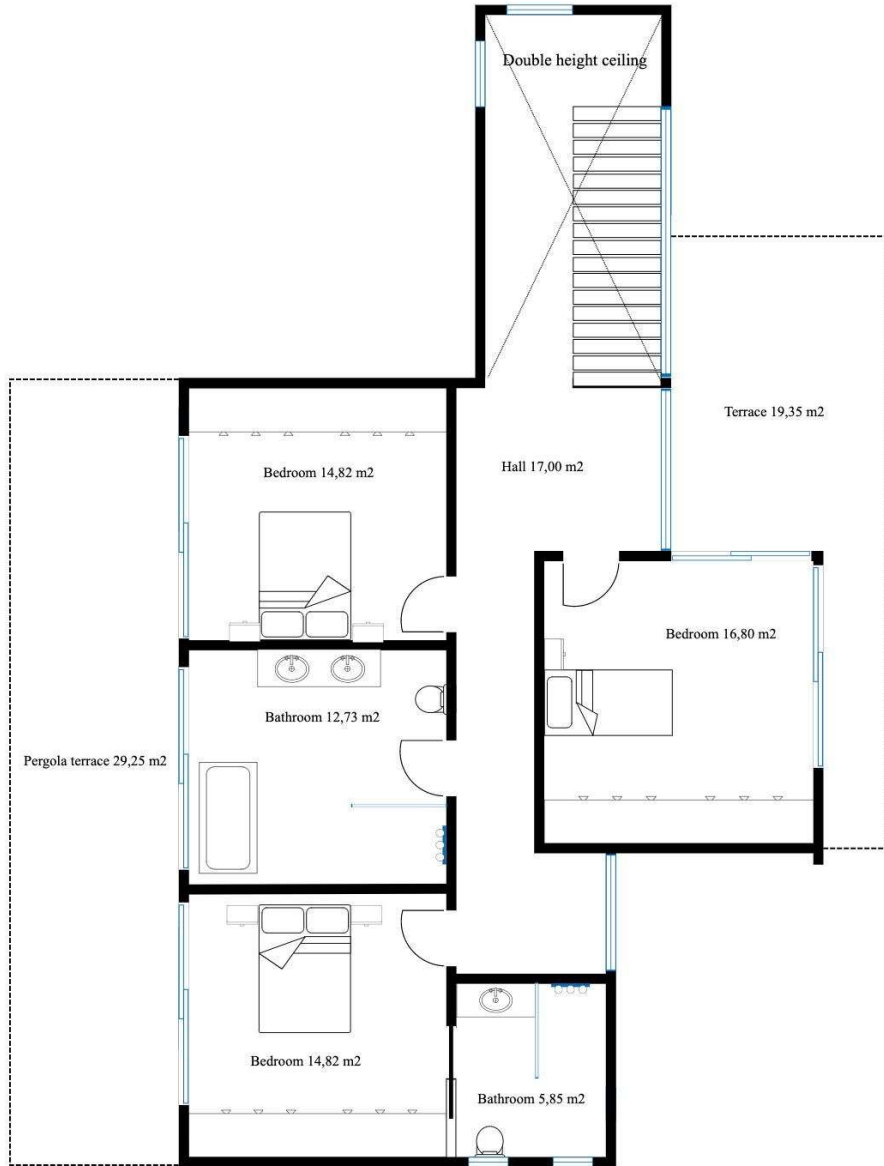
| | |
|-------------------------------|-----------------------|
| Built area: | 130,00 m ² |
| Useful floor area (Interior): | 110,14 m ² |
| Useful floor area (Exterior): | 181,29 m ² |
| Entrance: | 14,04 m ² |
| Guest toilet: | 2,81 m ² |
| Wardrobe entrance: | 2,81 m ² |
| Master bedroom: | 17,23 m ² |
| Master bathroom: | 10,13 m ² |
| Living area: | 42,19 m ² |
| Kitchen: | 20,93 m ² |
| Pool: | 32,00 m ² |
| Chill-out: | 15,00 m ² |
| Terrace: | 33,60 m ² |
| Covered terrace | 29,25 m ² |
| Pavement entrance garage: | 43,01 m ² |
| Pavement entrance garage: | 28,43 m ² |

Planimetry Ground floor villa 301



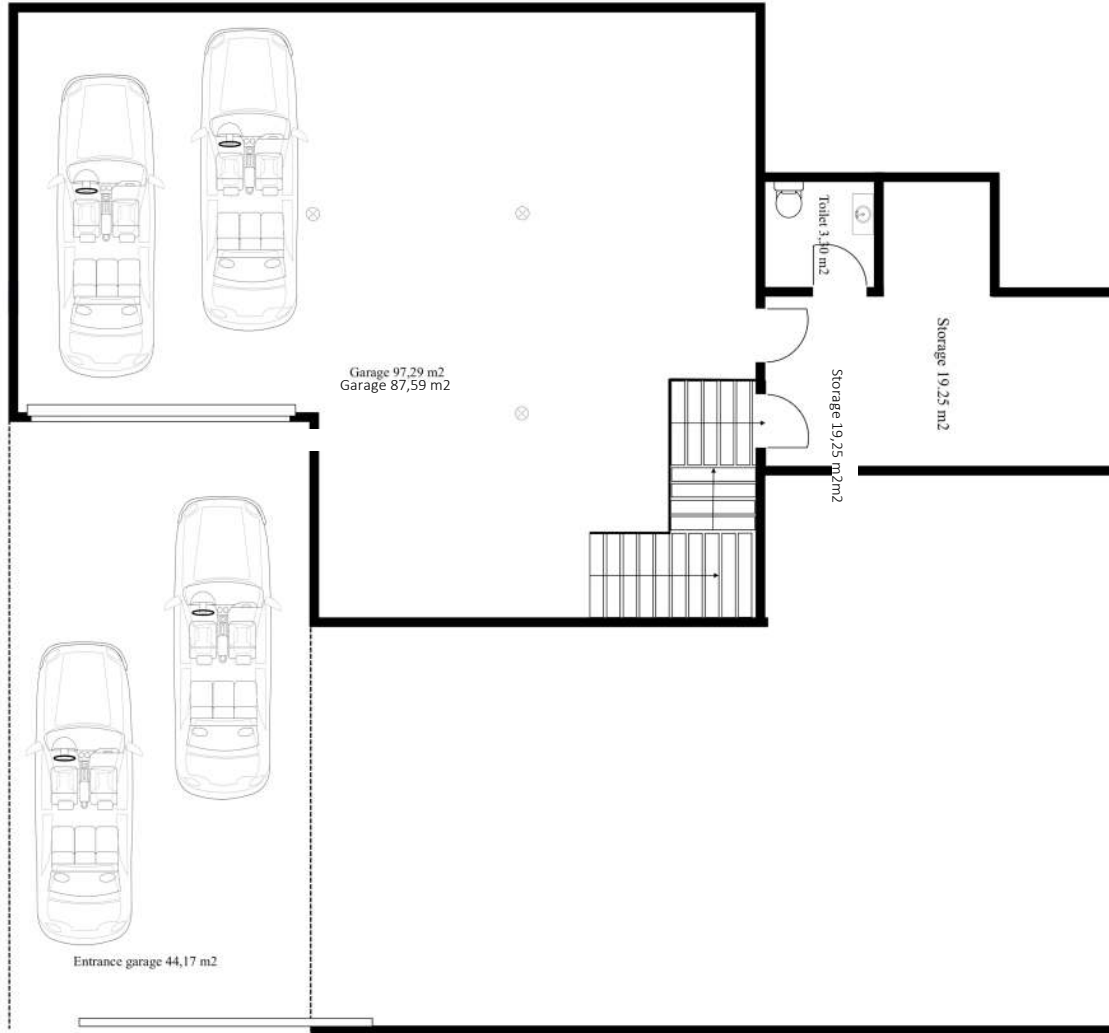
| | |
|--------------------------------|-----------------------|
| Built area: | 130,00 m ² |
| Useful floor area (Interior): | 110,14 m ² |
| Usefull floor area (Exterior): | 181,29 m ² |
| Entrance: | 14,04 m ² |
| Guest toilet: | 2,81 m ² |
| Wardrobe entrance: | 2,81 m ² |
| Master bedroom: | 17,23 m ² |
| Master bathroom: | 10,13 m ² |
| Living area: | 42,19 m ² |
| Kitchen: | 20,93 m ² |
| Terrace: | 33,60 m ² |
| Covered terrace: | 29,25 m ² |
| Pool: | 32,00 m ² |
| Chill-out: | 15,00 m ² |
| Pavement entrance villa: | 43,01 m ² |
| Pavement entrance garaje: | 28,43 m ² |

Planimetry First floor villa 301



| | |
|-------------------------------|-----------------------|
| Built area: | 110,00 m ² |
| Useful floor area (Interior): | 92,06 m ² |
| Useful floor area (Exterior): | 48,60 m ² |
| Landing: | 27,04 m ² |
| Bedroom: | 16,80 m ² |
| Bedroom: | 14,82 m ² |
| Bathroom: | 5,85 m ² |
| Bathroom: | 12,73 m ² |
| Bedroom: | 14,82 m ² |
| Terrace: | 19,35 m ² |
| Covered terrace | 29,25 m ² |

Planimetry Basement-garage villa 301



| | |
|-------------------------------|-----------|
| Built area: | 130,00 m2 |
| Useful floor area (Interior): | 110,14 m2 |
| Useful floor area (Exterior): | 0,00 m2 |
| Storage: | 19,25 m2 |
| Guest toilet: | 3,30 m2 |
| Garage: | 87,59 m2 |

Total construction

| | |
|-----------------|------------------|
| Ground floor | 311,29 m2 |
| First floor | 158,60 m2 |
| Basement/garaje | 130,00 m2 |
| TOTAL | 599,89 m2 |

FOUNDATION AND STRUCTURE

- Structural reinforced concrete floor
- Foundation according to the geotechnical report and bidirectional plates according to European and Spanish regulations

ROOF AND TERRACES

- Flat inverted roofs that guarantee optimal insulation thermal and tightness and partly walkable
- Insulation and waterproofing in accordance with regulations
- Glass railing, with hidden aluminum profile or stainless steel railing with horizontal rods on the 1st floor

EXTERNAL WOODWORK

- Premium aluminium or PVC joinery and double glazing, with thermal insulation interruption and sound insulation to save energy
- Sliding windows in living rooms, kitchen and bedrooms
- Motorized blinds in all bedrooms
- Sliding doors with invisible track on the floor side

HEATING AND AIR CONDITIONING

- Mitsubishi air conditioning with linear diffusers in hall, living/dinning and kitchen and separate remote controls, bedrooms with grilles
- Underfloor heating in from Daikin the bathrooms

INTERIOR & EXTERIOR DOORS FROM DOMPORTE

- White lacquered interior doors fsize 230 cm x 90 cm
- White pivot door size 246 cm x 104 x 40 cm cm (Other colours available)

SWIMMING POOL

- Heated pool, chlorine based or salt water system
- White or blue vitrified mosaic tiles and outdoor shower from Astralpool
- Chill-out

KITCHEN

- Premium kitchen furniture, doors and drawers with brakes.
- High resistance material worktop from Silestone to combine with the kitchen cabinets, sink and mixer taps by NOKEN - PORCELANOSA® or Hansgrohe®
- Energy-efficient appliances A+++ from Bosch including: American refrigerator, steam oven, microwave, ceiling extractor hob, induction, dishwasher and winecooler.

FLOORS TILES FROM SALONI 90 CM X 90 CM

- First quality porcelain stoneware floors from the Saloni® GROUP
- Continuity between the interior floor of the villa and the exterior of the terraces, placed with waterproof adhesive and treated non-slip and exterior protection <https://www.saloni.com/en/product>
- An anti-shock plate is placed under all floors
- Walls in bathrooms with Urbatek (Porcelanosa) plates 240cm x 120 cm

BATHROOMS FROM PORCELANOSA

- Bathrooms equipped with PORCELANOSA® GROUP furniture
- Porcelain enameled white sanitaryware from PORCELANOSA® GROUP with water saving mechanisms
- Bathtub and shower in the master bedroom showers with 10mm tempered glass from PORCELANOSA® GROUP
- Wall mounted toilets toilets
- Towel dryer
- Low flow thermostatic taps from NK (PORCELANOSA) or HANSGROHE® in showers and bathrooms
- Built-in sinks or in designer furniture and with mirror. <https://www.porcelanosa.com/uk/bathrooms>

LIGHTS FROM BPM LIGHTNING AND PHILIPS

- BPM LED downlight In ceilings of; bathrooms, kitchen and hallways
- PHILIPS LED downlights in ceilings of: living/dinning area and kitchen

MADEL LINEAR AIRCONDITIONING CONDUCTS

- Linear diffusors in living / dinning area, hall and kitchen

MITSHUBISHI AIRCONDITIONING IN BEDROOMS

- Mitsubishi airconditioning with air passage grilles and seperate remotes

HOME AUTOMATIZATION – DOMOTICA FROM ZENNIO

- Control of blinds, air conditioning and video portero

PLOT ACCESS GATE AND GARAGE DOOR

- Entrance gate and garaje door, motorized and with remote controls

ELECTRICITY AND TELECOMMUNICATIONS

- Villa with a high degree of electrification, which meets the low electrotechnical voltage regulations
- USB charging points and DTT and radio connections in the kitchen, living room living and bedrooms.
- Installation of video intercom
- Indirect lighting in the living space
- Niessen, Tensa, Niko or similar
- Decks and porches with waterproof baseboards

DRESSING ROOMS AND WARDROBES FROM LAMOIRE OR DAKOR

- Wardrobes: lacquered sliding doors according to interior design with handle finger
- Dressing rooms: no doors

FINISHES & GARDEN

- Street side: 1.50 m high wall with perforated mesh of 0,50m or 0,50m glass
- Division between the plots: Rigid fences of 2 meters high
- Easy maintenance with automated irrigation system

KNC THERMOSTAT

- Included

EXTRAS

PNEUMATIC PANORAMIC ELEVATOR (MAINTENANCE FREE)

- From € 30,000.00

ELEVATOR WHEELCHAIR FRIENDLY

- From 20.000,00 €

PORCELANOSA OR LAGO KITCHEN

- From 35.000,00 €

MADEL LINEAR DIFFUSORS IN FULL VILLA

- Price on request

WINDOWS FRON SCHUCO

- On request

SOLAR PANELS

- Network Connection Kit 5000W 25000Wh day Fronius Single-phase. This is a system of direct self-consumption without batteries, so that through this set of materials we can generate electricity in sunny hours. Does not require maintenance on any of its components and the duration average of these fcomponents is over 20 years.

AUTOMATIC POOL COVER OR POOL COVER

- On request, it depends on the size of the pool

UNDERFLOOR WET HEATING SYSTEM IN FULL VILLA

- Price on request

CHIMNEY FROM BIODAMINO

- Included

TOUCH SCREEN FROM ZENNIO - DOMOTICA

- Price on request

- 1 → **Reservation Fee 12.000,00 €**
- 2 → **Clients purchase the plot**
- 3 → **Sign Turnkey contract clients**

Parcial payment towards the architects project

Payment of 293.425,00 € in the Public Notary

Payment of 48.000,00 € what includes;

- * Movement of earth licenses
- * Construction license in clients name
- * Project in clients name
- * Cleaning and preparation of the plot
- * Topograhly and geological study
- * 3D Images
- * Quantity surveyor study
- * Health and Security study

- 4 → **Payment of licenses**

Once the client approves the project , we present it to he town hall for final approval and client pays 30.000,00 €

- 5 → **Start construction**

5% down payment at the start of the construction normally within 30 days of approval of the project.

- 6 → **Payments against Certification**

The 5% will be reflected in the contract and will be discounted in the following certifications of works carried out. In the 1st month work will be done for that amount. All other payments will be made against completed construction demonstrated by the construction certificates issued and signed by the architects.

- 7 → **Completion**

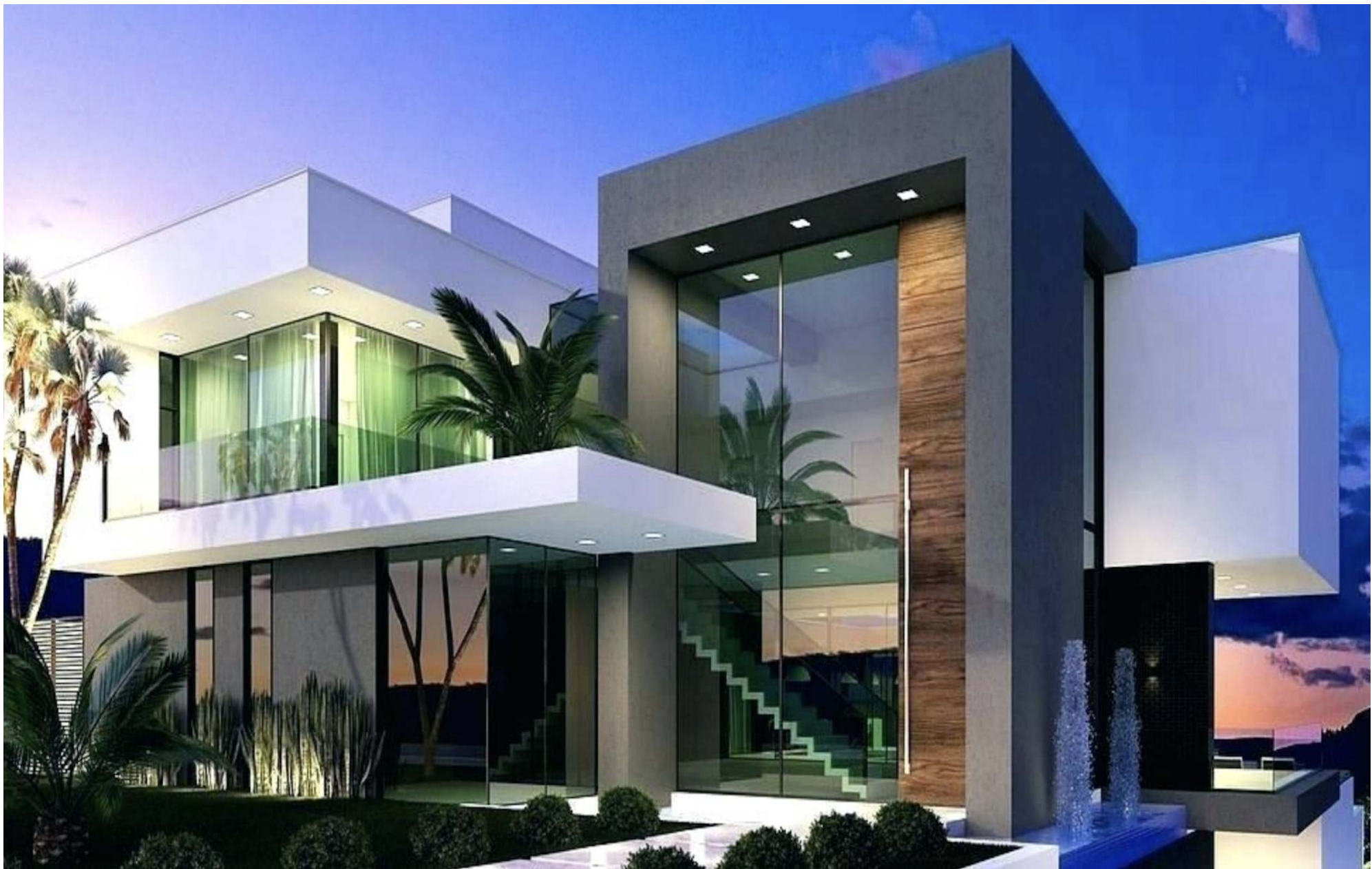
Construction completion time of 8 – 10 months. We will manage the final utility connections and first occupation license.

- 8 → **Total price**

895.000,00 € - VAT not included

VAT PAYMENTS

21% On the plot, project and licenses
10% on the construction













MATERIALES & FINISHINGS





CORTIZO PREMIUM QUALITY WINDOWS®

Vision Plus sliding

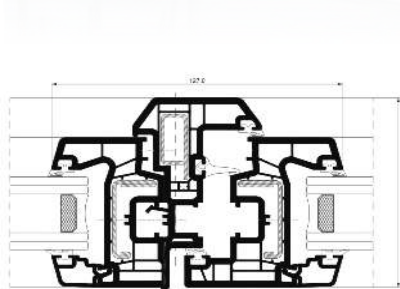
Sliding System

All of our windows building systems are tested in the Testing Laboratory of our Technical Center to guarantee the best performance of watertightness, air permeability and wind resistance, guaranteed by obtaining the maximum results in their test classifications.



FEATURES PVC & ALUMINIUM

PVC A70 triple board



PVC C70 sliding



COR 70 Industrial RTP



COR Vision plus sliding





DOMPORTE®
Pivot entry door

The Domporte entrance door offers very good thermal insulation. If optional equipment is selected to be installed, it can be used as a multifunctional door and integrated in smart home automation and building safety.



FEATURES

Measurements (cm): 246 x 104 x 40

Thickness (cm): 3,5

Stainless Steel door fittings

Low-gloss varnish





DOMPORTE®
White laquered doors

The Domporte interior door offers very good thermal insulation. If optional equipment is selected to be installed, it can be used as a multifunctional door and integrated in smart home automation and building safety.



FEATURES

Measurements (cm): 230 x 90

Thickness (cm): 3,5

Stainless steel door fittings

Chrome handle

Low-gloss varnish

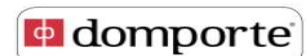




DOMPORTE®
Solid wooden doors

Solid wood, a healthy and pleasant material that maintains a home's thermal conditions. Its quality resists the passage of time.

This durability, adaptability, versatility, and availability make solid wood an ideal material for home decoration.



FEATURES

Measurements (cm): 230 cm x 90 cm

Thickness (cm): 3,5

Stainless door fittings

Chrome handle

High-gloss varnish

Colour: varnished on white or any other color on the RAL Color Chart.





PLADUR®

Plasterboard suspended ceiling

These suspended ceilings consist of Pladur® plasterboards screwed to a galvanized steel support structure properly attached to the floor above it.

Like all Pladur® units, their surfaces are finished in a smooth and continuous way, thanks to a special treatment on joints and screws which allows for any type of final decoration.

It includes perimetric curtain tracks with the possibility of incorporating LED light lines.



FEATURES

Color: Front - Light gray - Back - Brown (kraft)

Thickness (mm): 15

Integrated curtain track



LED lighting





SALONI®
B-Stone series 90 cm x 90 cm

B-Stone is complemented by three decorative reliefs inspired by the natural stone's own finish, such as ridges and carvings, together with a geometrical micro-texture, and they are all able to adapt to any space, as any ideal complement would do to a suit.

SALONI

FEATURES

Measurements (cm): 90 x 90

Thickness (cm): 10,30

Colour: clients choice, many other colours available

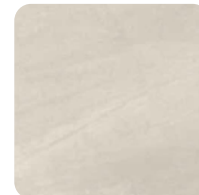
Finish: matt

Reference:

Use: intense interior

Product type: Saloni

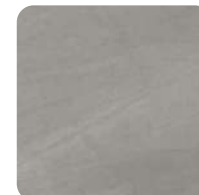
Petalava marphil



Majestic ash



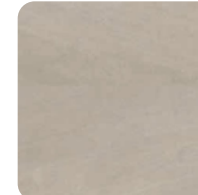
Petalava grey



Grey



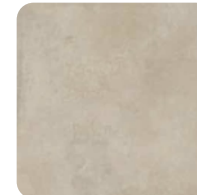
Petalava Arena



Graphite



Majestic beige



Ashgrey





B-STONE 90X90 GRAFITO ANTID.

SALONI®

B-Stone series anti-slip tiles 90 cm x 90 cm

B-Stone is complemented by three decorative reliefs inspired by the natural stone's own finish, such as ridges and carvings, together with a geometrical micro-texture, and they are all able to adapt to any space, as any ideal complement would do to a suit.



FEATURES

B-STONE 90X90 CHAVILLO VALID

Measurements (cm): 90 x 90

Thickness (cm): 10,30

Colour: clients choice

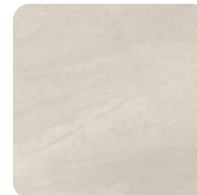
Finish: matt

Reference:

Use: intense exterior anti-slip

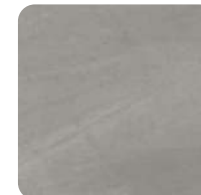
Product type: Saloni

Petalava marphil



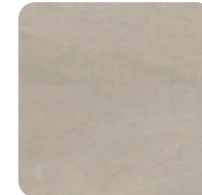
Majestic ash

Petalava grey



Grey

Petalava Arena

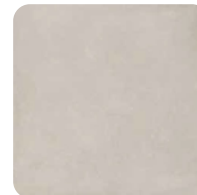


Graphite

Majestic beige



Ashgrey





PORCELANOSA®
Bathtub Krión Ras series

Krión is a material that is warm to the touch and similar to natural stone. It is made of two-thirds natural minerals (ATH – aluminium trihydrate) and a low percentage of high-resistance resins.

This composition gives Krión™ a number of exclusive features: it does not have any pores, it is antibacterial without any type of additive, it is hard-wearing, highly resistant and easy to repair, only requires minimum maintenance and is easy to clean



FEATURES

Measurements (cm): 170 x 80

Type: build-in or freestanding

Colour: white

Material: SolidSurface

Product type: Ras Porcelanosa

Other types available





PORCELANOSA®

Washbasins Krion Wood Roble Brone and Aro series

Krion is a material that is warm to the touch and similar to natural stone. It is made of two-thirds natural minerals (ATH – aluminium trihydrate) and a low percentage of high-resistance resins.

This composition gives Krion™ a number of exclusive features: it does not have any pores, it is antibacterial without any type of additive, it is hard-wearing, highly resistant and easy to repair, only requires minimum maintenance and is easy to clean



FEATURES

Measurements (cm): 120 x 40 and 70 x 40

Type: wall mounted

Colour: black/brown or white

Material: SolidSurface

Product type: Aro Porcelanosa

Other types available





PORCELANOSA®

Free standing washbasins taps Series Mood and Lounge

Taps that make a difference.

The bathroom taps belonging to the PORCELANOSA Grupo are designed for all types of bathrooms and their designs range from classic to avant-garde shapes.

Water, in its continuous flow, in its continuous transformation, is our inspiration.



FEATURES

Measurements (cm): 90 x 4

Type: free standing

Colour: black, white, Chrome

Water outlet height: 862 mm

Product type: Noken Porcelanosa

Other types available





PORCELANOSA®
Washbasins Krimon Mertens Roble Noche

Trend-setting sinks.
The sinks have gone from being a complement to one of the fundamental pieces of the bathroom. This evolution of the concept has allowed the development of new formats and designs with elegance as a priority.



FEATURES

Measurements (cm): 1200 x 540

Type: wall mounted

Colour: dark cream – other colours available

Product type: Krimon Mertens Roble Noche





Master bathroom taps

PORCELANOSA®

Noken low-flow taps for washbasins

Master bathroom: Single-lever basin mixer with Ø28 mm ceramic cartridge. 3/8" connections, a length of the hoses of 512 mm, with automatic drain and without aerator. Cascading water fall. The flow rate at 3 bar is 7.85 l / min.

Bathrooms: Single-lever basin mixer with Ø35 mm ceramic cartridge, 3/8" connections, a length of 370 mm. Hoses, with automatic drain and" plus "aerator. The flow rate at 3 bar is 12.01l / min.



FEATURES

Type master bathroom: Imagine

Type bathroom: Acron

Colour: chrome

Characteristics: single-lever

Bathroom taps





PORCELANOSA®

Wall-hung toilet with horizontal outlet

This bathroom collection is based on minimal forms that fit perfectly, and responds to the challenges posed by current interior solution. It provides functional benefits without compromising design.

It includes:

- Chrome flush plate
- Compact seat and lid with cushioned closure



FEATURES

Back to wall

Installation type: wall-hung

Outlet type: horizontal

Product type: Lounge

Ref.: 100144293

Length: 540

Width: 360

Height: 495

Lounge white





PORCELANOSA®
Thermostatic rain showers

Master bathroom: Thermostatic shower column with built-in wax thermoelement and satin stainless steel frame. Integrated shower head, hand shower holder fixed to the column or on the wall, hand shower, additional "JOY" hand shower and integrated jet for the lower back. With 1/2 "connections and with a distance of 150mm between them. Includes non-return valve and safety stop at 38°. The flow rate at 3 bars of the hand shower is 9.2l / min, of the nozzle 12l / min and of the 15l / min jets.

Bathrooms: Thermostatic shower column with built-in wax thermoelement. Contains shower head, shower bar with sliding hand shower bracket, hand shower and additional "JOY" hand shower. 1/2 "connections at a distance of 150 ± 15mm between them. Includes a non-return valve and safety stop at 38°. The flow rate at 3 bars from the hand shower is 6.8l / min and from the sprinkler 7.4l / min.

Master bathroom shower column 100119809

FEATURES

- Complete shower sets
- Thermostatic tap fittings
- Overhead rain showers
- Flexible shower hose
- Hand shower
- Hand shower holder

Shower columns 100138775



MATERIALS & FINISHINGS

HEATED POOL WITH OUTDOOR SHOWER



HEATED POOL

Thermostatic rain shower from ASTRALPOOL®

Shower Iguazu is a new model of shower for swimming pools and gardens of the manufacturer AstralPool. Made of stainless steel AISI-316 matt, incorporates a white front trim in acrylic material. Square overhead sprayer in antical chromed brass, 2 frontal jets with nebulizer effect controlled by a 2-way reversing valve.

Flow and water temperature are regulated by a mixing valve.

Design, quality and functionality come together in this exclusive shower model.

Among its high performance highlights the nebulization effect, which allows to be covered by a refreshing cloud of water spray as an independent option to its powerful shower flow.

It is part of the AstralPool Signature range, the AstralPool Premium range of products for swimming pools (3 years warranty).



FEATURES

Constructed in satin stainless steel AISI-316

Embellisher Solid surface

1 spray chrome plated brass.

1 flow valve + temperature with selector 2 exits,

Jets massages + nebulizer

Water connection 1/2 "BSP INT.

Neutral packaging with personalized label

Personalized instruction manual

Height of the sprinkler to the ground 2 m

Chrome finish





BIOKAMINO®
Wall fireplaces - Raffaello

With its geometrical and original style, Raffaello is a wall bio fireplace, perfect to give a touch of elegance and warmth to the surrounding furniture.

The sensation of a pure and authentic flame combined with the Italian style of bioKamino, Raffaello will captivate guests and masters of the house. It's provided with bioKamino burner, extremely safe and ecological.



FEATURES

Measurements (cm): 130 x 68

Type: BK1368

Colours: white, inox, aluminium grey, bordeaux

Consumption: 0,27 l/h

Power: 2 kw

Weight: 22 kg



Chrome finish





LARMARIO®

Custom wardrobes and dressings

Rectangular pieces that are linked to mix and harmonize colors and materials, forming a collage that makes this a very special door.

- New generation door fittings allow a smooth closure.
- Adjustable leveling systems to set up completely-removable cabinets or drawer guides to make the most of the space.
- High-density melamine interior.



FEATURES

Measurements (cm): 300 x 70

Type: Elegant

Colours: clients choice

Different styles and colours available





LARMARIO®

Custom dressings and wardrobes

The dressing room can be the room in the home that brings the greatest pleasure to a person who is passionate about fashion, clothing and trends. This intimate place allows us to establish a certain order in our wardrobe to feel more comfortable when choosing the right garment.

We have extensive experience when designing and planning projects with custom dressing rooms. We also have multiple devices for the reorganization and placement of specific elements, this is what we call accessories.



FEATURES

Measurements (cm): 300 x 70

Type: Elegant

Colour: clients choice

Different colours available





PREMIUM KITCHEN®
Custom made Premium kitchens

This kitchen includes:

- Great storage space with integrated home appliances. High density four faced laminated doors with melamine resin coating.
- A central island equipped with an induction cooker, sink and a large amount of storage space.

FEATURES

Measurements (cm): 2 x 300 x 60

Island measurements (cm): 130 x 120

Counter material: Silestone

Colour: colour to choose

Multiple finishes available





BOSCH® A+++
Premium white goods



Bosch Home Appliances is dedicated to providing intelligent, reliable, and appealing solutions to make life a bit easier every day.

This underscores Bosch's ambition to create technology that always serves a purpose: our products are there whenever people need them, and harmonize with the home environment when they're not — always supportive, never obtrusive.

Also available from SIEMENS or MIELE

Induction hob
Ref: PXY675DC1E

Steam oven
Ref: HRG635BS1

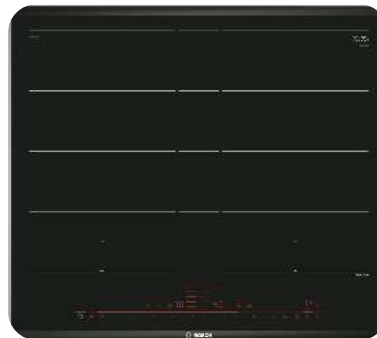
American refrigerator
Ref: KAS90VI30

FEATURES

American refrigerator: 177 cm x 91 cm - No Frost A++* American refrigerator with ice and water dispenser: cold water and ice at the touch of a button - Very efficient.

Steam oven: 60 cm - Control with TFT display: very easy to use thanks to its central control ring and all the functionalities with texts and symbols in color.

Induction HOB: 60 cm - Induction: fast, safe, clean and very efficient.





BOSCH® A+++
Premium white goods

Bosch Home Appliances is dedicated to providing intelligent, reliable, and appealing solutions to make life a bit easier every day.

This underscores Bosch's ambition to create technology that always serves a purpose: our products are there whenever people need them, and harmonize with the home environment when they're not — always supportive, never obtrusive.

Also available from SIEMENS or MIELE

Ceiling extractor fan
Ref: DRC99PS20

Microwave
Ref: WIW24300ES

Dishwasher
Ref: SMV46JX03E

FEATURES

Dishwasher: integrated – 60 cm - Drying system with Zeolites® - 8 programs: Intensive 70 °C, automatic 45-65 °C, ECO 50 °C, silent program 50 °C, cups 40 °C, 1 hour 65 °C, quick 30 min 45 and prewash

Microwave: integrated - 45 cm - Control with TFT display: central control ring and all the functionalities with texts and symbols in color.

Ceiling extractor fan: 90 cm – finished in white glass with remote control





BOSCH® A+++
Premium white goods

Bosch Home Appliances is dedicated to providing intelligent, reliable, and appealing solutions to make life a bit easier every day.

This underscores Bosch's ambition to create technology that always serves a purpose: our products are there whenever people need them, and harmonize with the home environment when they're not — always supportive, never obtrusive.

Also available from SIEMENS or MIELE

Washing machine
Ref: WIW24300ES



FEATURES

Washing machine: integrated - 60 cm - 8 kg - max. spin speed: 1200 rpm - Internal drum lighting - EcoSilence, efficient and silent -10 years warranty. Super quiet: 41/66 dB (A) re 1 pW

Wine cooler: Nominal capacity in number of standard 0.75 liter bottles 197
Built-in appliance No





NIESSEN®
Zenit Line switches & plugs

Zenit is the most complete line for all types of residential and tertiary installations. An appreciated design and a beautiful finishing line that adds value to the installations, with advanced features that add comfort and a high level of performance.

Three types of finishes are offered: white, silver and anthracite.



FEATURES

Switches

Intensity (A): 16
Voltage (V): 250
Optional LED lightning

The security system on the plugs prevents that you would have unintentional direct contact

TV installation
Threaded connector

Plugs

Intensity (A): 16
Voltage (A): 250

White



Silver



Anthracite





BPM Lighthning®
Bedrooms & bathrooms

Mini Catli round recessed lighting for bathrooms, bedrooms and hall, manufactured in aluminum.

It has a tilting and swivelling light system. The ease of installation and bulb changing is remarkable. Suitable for LED bulbs (lamp holder GU10 included)



FEATURES

Mini Catli 92Ø LED - IP20

3010 Striped finishes Aluminium

Black Aluminium underwire 3053/4210

White / Gold 2010/5210 Black Eggshell

LED bulb 10w 3000k / 4000k

Driver included

Dimensions Diameter cutting 92o 80o

White



Gold



Brushed aluminium





PHILIPS®
Livingroom, dining room and kitchen

The Philips Slim Ledinaire 11W DN065B LED Downlight is an option for general lighting in large spaces because it has excellent properties.

The LED downlights incorporates high-performance Philips brand components with high efficiency. The Philips Slim Ledinaire 11W DN065B LED Downlight has a design that allows a very homogeneous distribution of light at an opening angle of 90°. Includes an opal diffuser that helps reduce glare.



FEATURES

Power: 11W

Brightness: 1000 lm

Energy class: A+

Dimensions: 174 mm x 34 mm

Colour: white

Frequency: 50.60 Hz

Luminous efficiency: 90 lm / W





MADEL®

LOOK hidden linear diffusers & LSD Sectored linear slot diffusers & LRT linear diffusers

The **LOOK** hidden linear diffusers are designed to combine the aesthetics with the technical performance. They can be mounted in false ceilings hiding the frame with filler and leaving visible only the slot. They allow the formation of diffuser continuous lines, with active and inactive areas, without breaking the uniformity of the whole.

The **LSD** series linear diffusers are designed to combine the aesthetics with the technical performance. They can be mounted in false ceilings or suspended from the ceiling. They allow the formation of diffuser continuous lines, with active and inactive areas, without breaking the uniformity of the whole.

They are suitable both for supply and return.

MADEL®

FEATURES

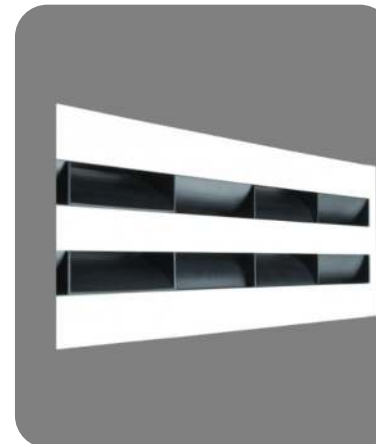
LRT linear diffusers LNG for air return

The LRT series linear diffusers are designed to combine the aesthetics with the technical performance. Linear slot diffuser with directional blades for air return, removable without tools by pressing on the invisible PUSH fastener.

LRT linear diffuser



LSD Sectored linear diffuser



Hidden linear diffuser





Linear slot diffusers

DAIKIN®
HIDROBOX Interior unit

The Daikin VRV Hydrobox HXY125A8 interior unit, with 12.5 kW of power, is ideal for the heating and cooling of high-performance spaces, with a wide range of applications, such as hot or cold water in underfloor, air handling units, low temperature radiators, etc. Fully integrated water-side components save time on system design.

There is a wide range of functioning for hot water production, with a large exterior temperature operation range (down to -20°C and up to 15°C) and hot/cold water from 5° to 45°C; without the need for an electric heater.

Precise temperature control, fresh air supply, Biddle air curtains, and hot water production - all of that integrated in just one system that needs only one contact point. Space saving contemporary wall-hung design.



FEATURES

Power (Kw): 12.5

Type: Interior Unit

Energy Efficiency: A

Interior Unit Noise Level: 44db

Measurements (mm):

Height: 890

Width: 480

Depth: 344

Mod. HXY125A8





ZENNIO®
Square TMD-display

5-button capacitive panel and upper graphic display with thermostat

The Square TMD-Display is a capacitive room controller with 5 multifunction buttons and 1.8" backlit frame, totally customizable to cause the desired aesthetic impression in any ambience. Everyone can create unique compositions, which could include images, icons, texts or logos. This customization is printed on a high-strength tempered glass with a high-quality PC-ABS frame.

The Square TMD-Display allows selecting the function for each of its buttons and indicators shown in the display. TMD also includes a thermostat function, internal temperature sensor, and two analog/digital inputs.



FEATURES

- Completely customized image for printout glass
- 1.8" Backlit display (128 x 64 pixels)
- 5 touch áreas - 2 Analog/digital inputs
- No power supply different from the bus needed
- Temperature sensor
- State LED indicators with custom luminosity
- KNX BCU integrate.
- Magnetic fit with security mechanism to avoid Accidental removal metallic stand included
- Complete data saving in case of power failure





ZENNIO®
Z70 Com - 7" capacitive touch screen

The Z70 COM is a color capacitive touch panel with 7" display, including the built-in Zennio Getface IP Video Intercom System. Complying with minimalist aesthetics, it provides total control in smart homes and complete communication with the video intercom, including microphone and loudspeakers. The built-in proximity sensor makes the screensaver appear when the touch panel is not being used and the luminosity sensor adjust the brightness automatically. It is possible to control it remotely from smartphones and tablets with the free mobile app. Z70 COM incorporates an internal temperature sensor, thermostat, and 4 analog-digital inputs. It includes a USB port for configuration download and an Ethernet port. Plug&Play System without additional configurations. Accessories: temperature and motion sensors.



FEATURES

- 16 Million Colour LCD display
- Up To 12 free configuration pages
- Up To 96 control functions
- Video intercom functionality controlling up to 3 doors
- 2 independent thermostats
- Customizable device orientation
- Built-in temperature sensor
- Synchronizable clock with NTP
- BCU KNX integrated - Mini-USB connection
- Magnetic anchoring





*The information contained in this website and/or sales catalogue is for general and illustrative information purposes only. The information is provided by Sol Estates Investments SL, and while we endeavour to keep the information up to date and correct, we make no representations or warranties of any kind, express or implied, about the completeness, accuracy, reliability, suitability or availability with respect to the website and/or this sales catalogue or the information, products, services, or related graphics contained on the website or in this sales catalogue for any purpose. The final layouts, materials, design and other terms and conditions shall always be subject to separate written agreement.