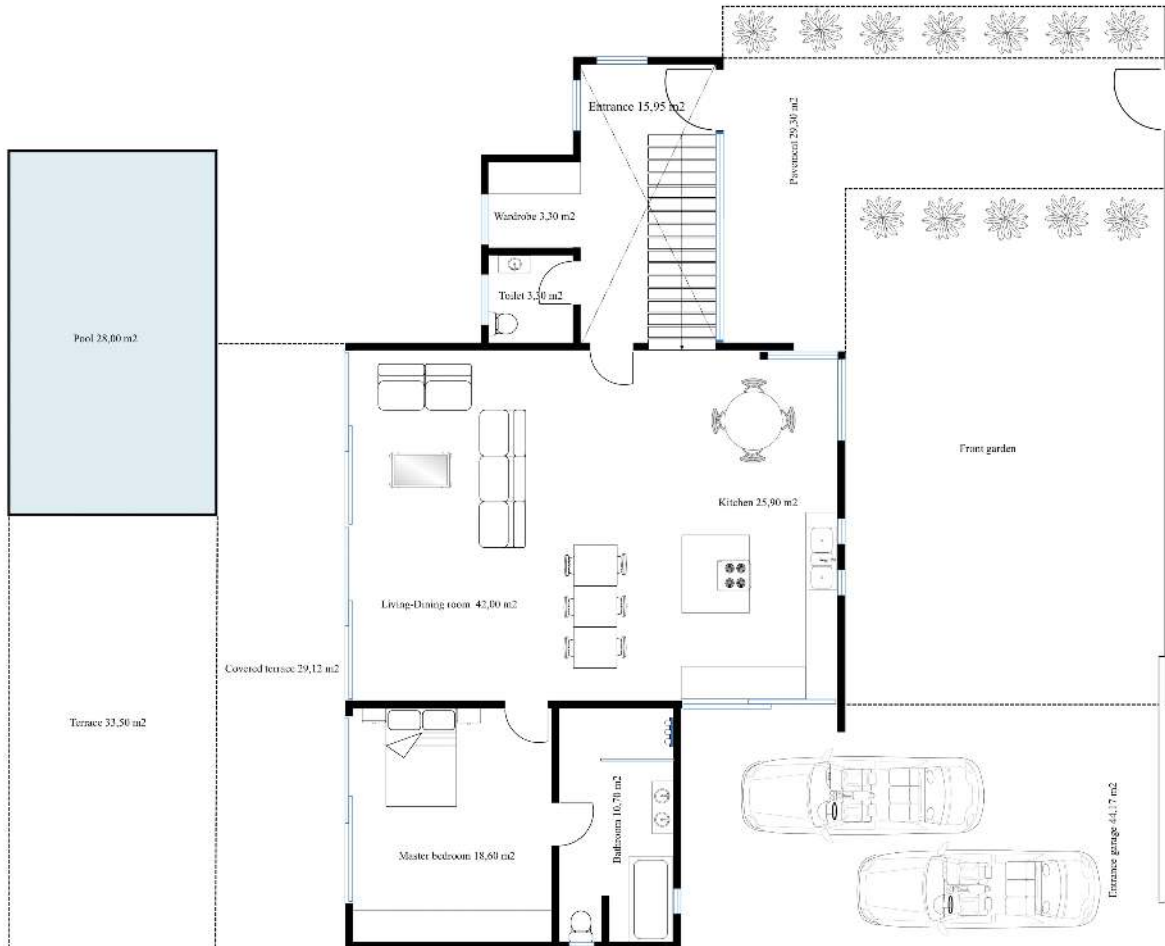
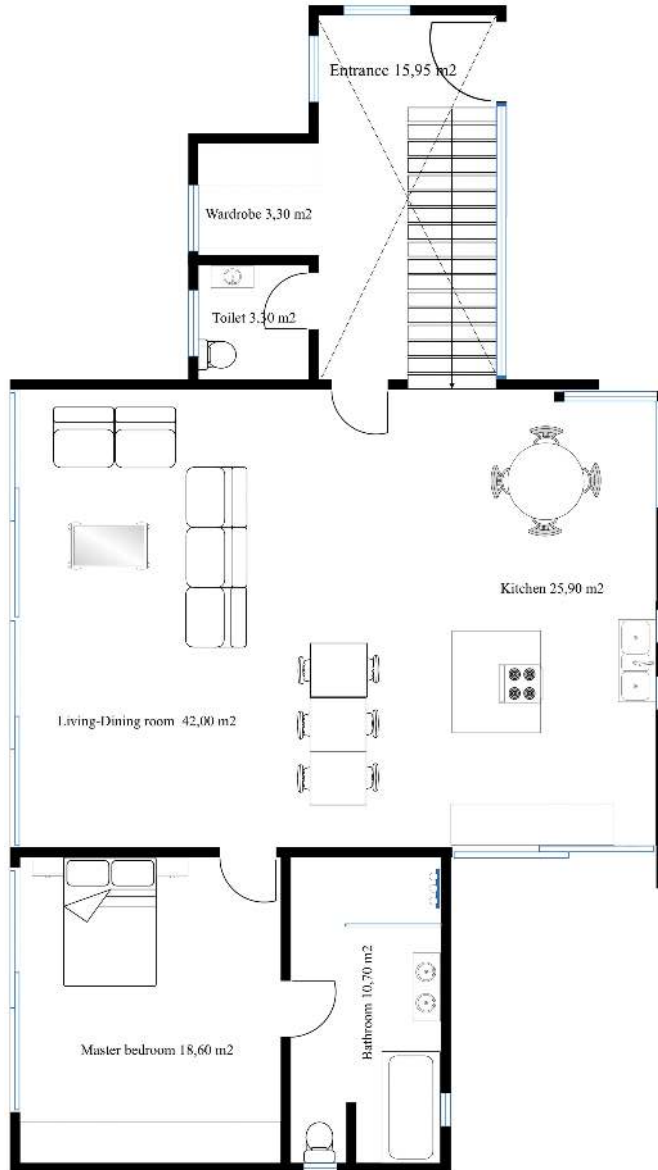


# Planimetry Full ground floor villa 301



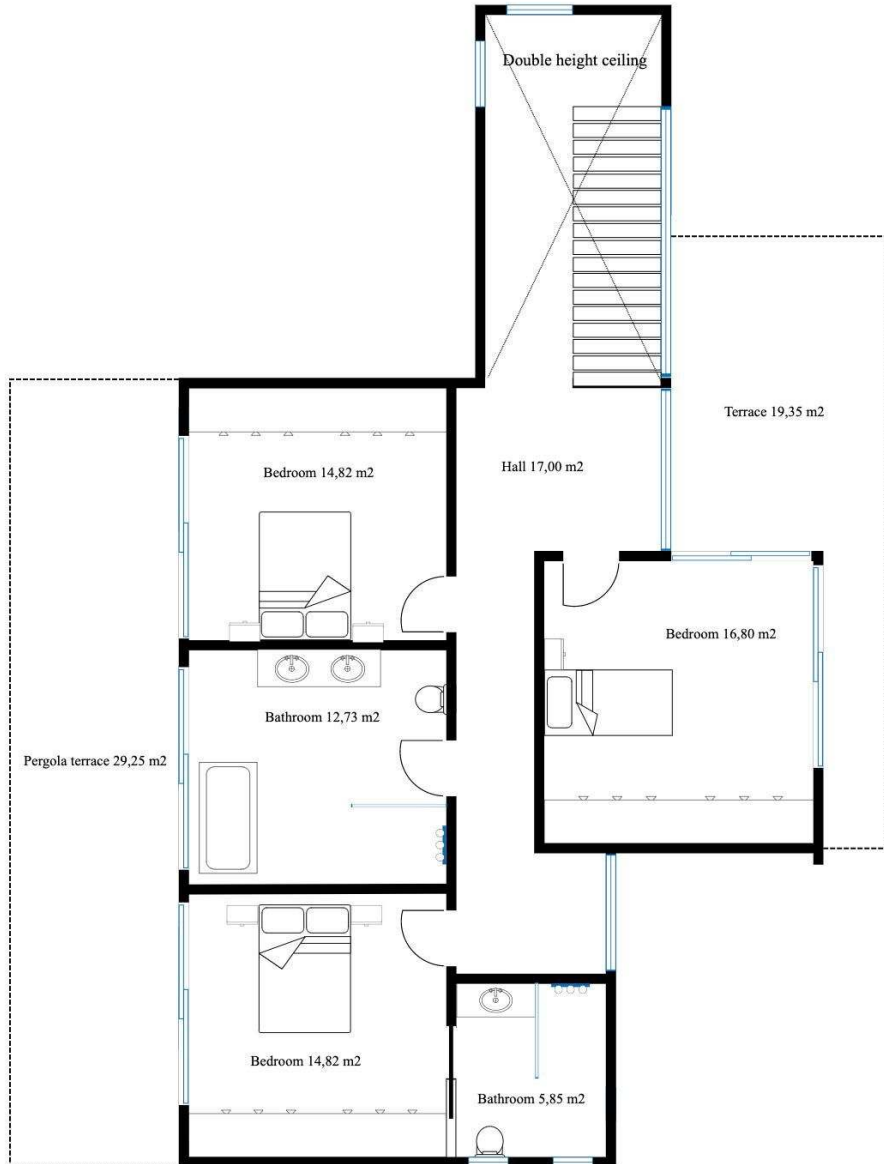
Built area:	130,00 m <sup>2</sup>
Useful floor area (Interior):	110,14 m <sup>2</sup>
Useful floor area (Exterior):	181,29 m <sup>2</sup>
Entrance:	14,04 m <sup>2</sup>
Guest toilet:	2,81 m <sup>2</sup>
Wardrobe entrance:	2,81 m <sup>2</sup>
Master bedroom:	17,23 m <sup>2</sup>
Master bathroom:	10,13 m <sup>2</sup>
Living area:	42,19 m <sup>2</sup>
Kitchen:	20,93 m <sup>2</sup>
Pool:	32,00 m <sup>2</sup>
Chill-out:	15,00 m <sup>2</sup>
Terrace:	33,60 m <sup>2</sup>
Covered terrace	29,25 m <sup>2</sup>
Pavement entrance garage:	43,01 m <sup>2</sup>
Pavement entrance garage:	28,43 m <sup>2</sup>

# Planimetry Ground floor villa 301



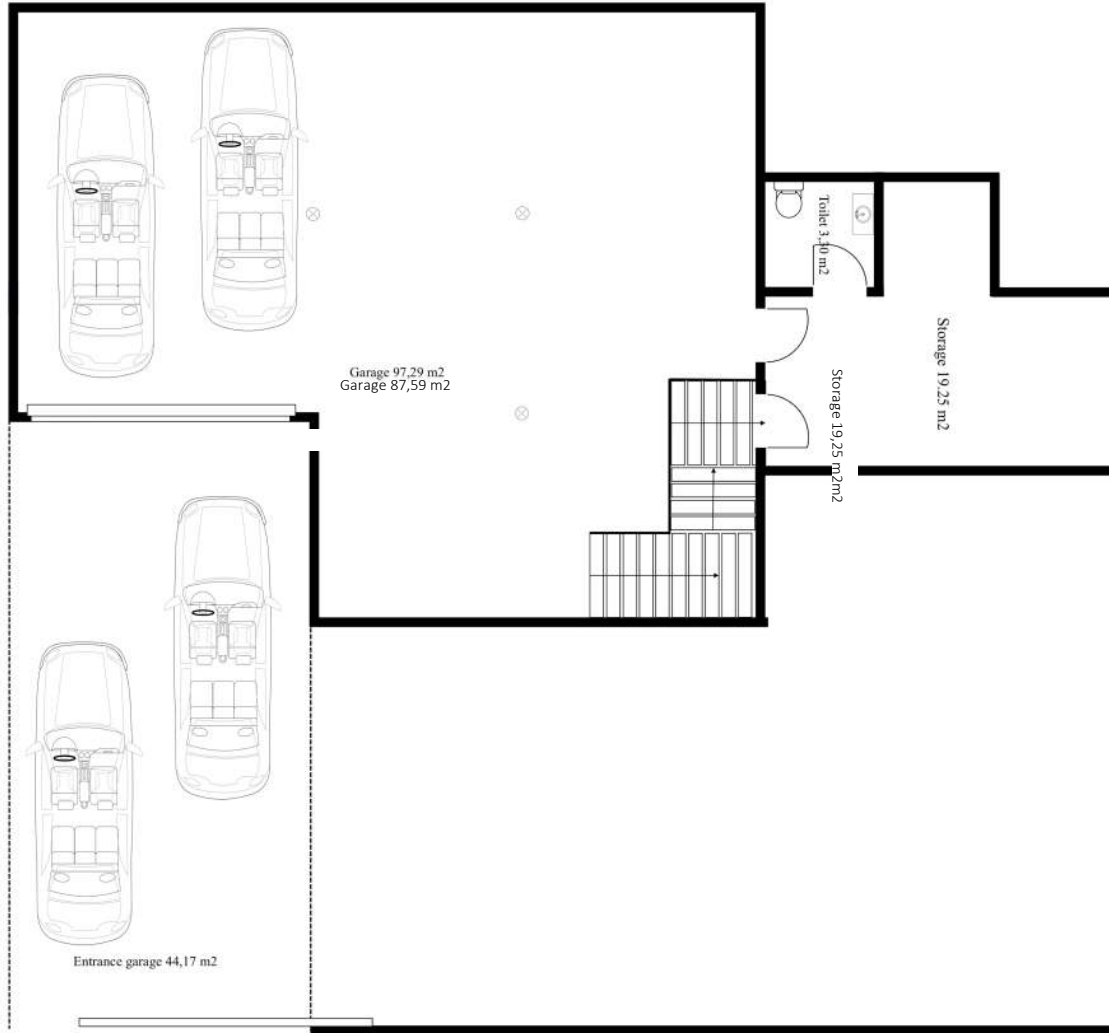
Built area:	130,00 m <sup>2</sup>
Useful floor area (Interior):	110,14 m <sup>2</sup>
Usefull floor area (Exterior):	181,29 m <sup>2</sup>
Entrance:	14,04 m <sup>2</sup>
Guest toilet:	2,81 m <sup>2</sup>
Wardrobe entrance:	2,81 m <sup>2</sup>
Master bedroom:	17,23 m <sup>2</sup>
Master bathroom:	10,13 m <sup>2</sup>
Living area:	42,19 m <sup>2</sup>
Kitchen:	20,93 m <sup>2</sup>
Terrace:	33,60 m <sup>2</sup>
Covered terrace:	29,25 m <sup>2</sup>
Pool:	32,00 m <sup>2</sup>
Chill-out:	15,00 m <sup>2</sup>
Pavement entrance villa:	43,01 m <sup>2</sup>
Pavement entrance garaje:	28,43 m <sup>2</sup>

# Planimetry First floor villa 301



Built area:	110,00 m <sup>2</sup>
Useful floor area (Interior):	92,06 m <sup>2</sup>
Useful floor area (Exterior):	48,60 m <sup>2</sup>
Landing:	27,04 m <sup>2</sup>
Bedroom:	16,80 m <sup>2</sup>
Bedroom:	14,82 m <sup>2</sup>
Bathroom:	5,85 m <sup>2</sup>
Bathroom:	12,73 m <sup>2</sup>
Bedroom:	14,82 m <sup>2</sup>
Terrace:	19,35 m <sup>2</sup>
Covered terrace	29,25 m <sup>2</sup>

# Planimetry Basement-garage villa 301



Built area:	130,00 m <sup>2</sup>
Useful floor area (Interior):	110,14 m <sup>2</sup>
Useful floor area (Exterior):	0,00 m <sup>2</sup>
Storage:	19,25 m <sup>2</sup>
Guest toilet:	3,30 m <sup>2</sup>
Garage:	87,59 m <sup>2</sup>

## Total construction

Ground floor	311,29 m <sup>2</sup>
First floor	158,60 m <sup>2</sup>
Basement/garaje	130,00 m <sup>2</sup>
<b>TOTAL</b>	<b>599,89 m<sup>2</sup></b>