

CONTEMPORARY VILLAS

Bespoke Villas

WE BELIEVE IN PERFECTION



Perfection exists

It is something you can see and feel

It are the villas we build

For more than 20 years, this belief has inspired us to work harder. Today, we can proudly say that we specialise in turning our clients' dreams into a reality.

We are promoters and builders, with a team of architects, designers and technicians who combine their forces to offer the highest grade of construction, creating the perfect paradise to enjoy the highest quality of life.

Our luxurious single-family villas summarise our clients' tastes and needs, supported by the latest technologies, in smooth harmony with their impressive avant-garde designs.

FRONT VIEW VILLA 344



All plans, photos and designs here reproduced are the sole property of the developer and cannot be used in any way, copied, sold or transferred to other developers.
Some elements shown on the pictures may be listed as optional.

GARDEN VIEW VILLA 344



All plans, photos and designs here reproduced are the sole property of the developer and cannot be used in any way, copied, sold or transferred to other developers.
Some elements shown on the pictures may be listed as optional.

STREET VIEW VILLA 344



All plans, photos and designs here reproduced are the sole property of the developer and cannot be used in any way, copied, sold or transferred to other developers.
Some elements shown on the pictures may be listed as optional.

STREET VIEW VILLA 344



All plans, photos and designs here reproduced are the sole property of the developer and cannot be used in any way, copied, sold or transferred to other developers.
Some elements shown on the pictures may be listed as optional.

GARDEN VIEW VILLA 344



All plans, photos and designs here reproduced are the sole property of the developer and cannot be used in any way, copied, sold or transferred to other developers.
Some elements shown on the pictures may be listed as optional.

GARDEN VIEW VILLA 344



All plans, photos and designs here reproduced are the sole property of the developer and cannot be used in any way, copied, sold or transferred to other developers.
Some elements shown on the pictures may be listed as optional.

ENTRANCE GARAGE VILLA 344



All plans, photos and designs here reproduced are the sole property of the developer and cannot be used in any way, copied, sold or transferred to other developers.
Some elements shown on the pictures may be listed as optional.

GARDEN VIEW VILLA 344



All plans, photos and designs here reproduced are the sole property of the developer and cannot be used in any way, copied, sold or transferred to other developers.
Some elements shown on the pictures may be listed as optional.

ARIEL VIEW VILLA 344



All plans, photos and designs here reproduced are the sole property of the developer and cannot be used in any way, copied, sold or transferred to other developers.
Some elements shown on the pictures may be listed as optional.

LEFT SIDE VIEW VILLA 344



All plans, photos and designs here reproduced are the sole property of the developer and cannot be used in any way, copied, sold or transferred to other developers.
Some elements shown on the pictures may be listed as optional.

LEFT SIDE VIEW VILLA 344



All plans, photos and designs here reproduced are the sole property of the developer and cannot be used in any way, copied, sold or transferred to other developers.
Some elements shown on the pictures may be listed as optional.

RIGHT SIDE VIEW VILLA 344



All plans, photos and designs here reproduced are the sole property of the developer and cannot be used in any way, copied, sold or transferred to other developers.
Some elements shown on the pictures may be listed as optional.

GARDEN VIEW VILLA 344



All plans, photos and designs here reproduced are the sole property of the developer and cannot be used in any way, copied, sold or transferred to other developers.
Some elements shown on the pictures may be listed as optional.

STREET VIEW VILLA 344



All plans, photos and designs here reproduced are the sole property of the developer and cannot be used in any way, copied, sold or transferred to other developers.
Some elements shown on the pictures may be listed as optional.

BACK VIEW VILLA 344



All plans, photos and designs here reproduced are the sole property of the developer and cannot be used in any way, copied, sold or transferred to other developers.
Some elements shown on the pictures may be listed as optional.

EXAMPLE KITCHEN VILLA 344



All plans, photos and designs here reproduced are the sole property of the developer and cannot be used in any way, copied, sold or transferred to other developers.
Some elements shown on the pictures may be listed as optional.

EXAMPLE BATHROOM VILLA 344



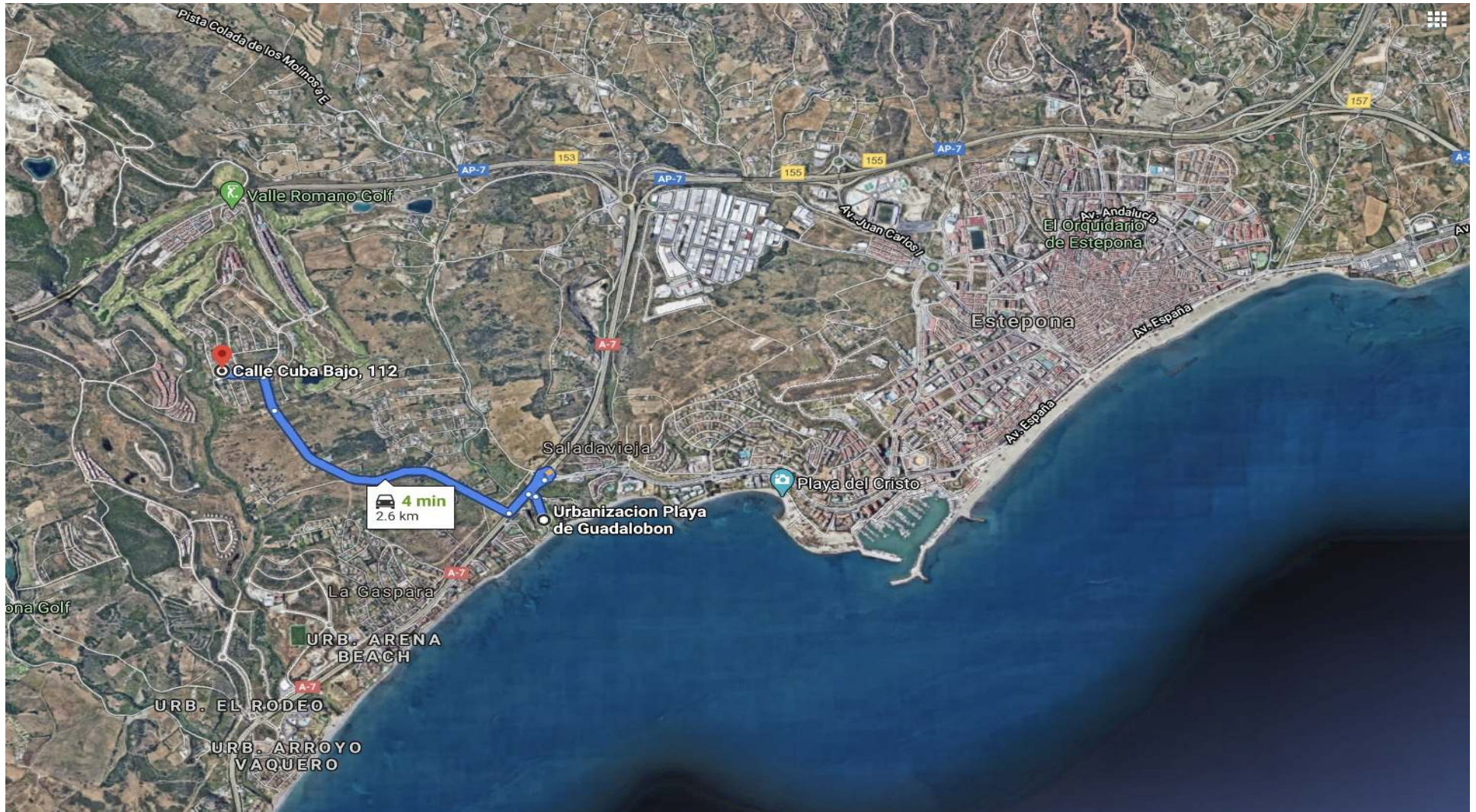
All plans, photos and designs here reproduced are the sole property of the developer and cannot be used in any way, copied, sold or transferred to other developers.
Some elements shown on the pictures may be listed as optional.

EXAMPLE BATHROOM VILLA 344



All plans, photos and designs here reproduced are the sole property of the developer and cannot be used in any way, copied, sold or transferred to other developers. Some elements shown on the pictures may be listed as optional.

LOCATION VILLA 344



All plans, photos and designs here reproduced are the sole property of the developer and cannot be used in any way, copied, sold or transferred to other developers.
Some elements shown on the pictures may be listed as optional.

FEATURES VILLA 344

Location	<i>Valle Romano - Estepona</i>
Bedrooms	<i>3</i>
En-suite bathrooms	<i>3</i>
Guest toilet	<i>1</i>
Built area	<i>638,96 m2</i>
Plot	<i>1.450,00 m2</i>
Covered terraces	<i>135,05 m2</i>
Uncovered terraces	<i>81,00 m2</i>
Pool	<i>32,00 m2</i>
Chill-out	<i>15,00 m2</i>
Garage	<i>45,34 m2</i>
Orientation	<i>South</i>
Price	<i>995.000,00 €</i>



All plans, photos and designs here reproduced are the sole property of the developer and cannot be used in any way, copied, sold or transferred to other developers.
Some elements shown on the pictures may be listed as optional.

[illegible]

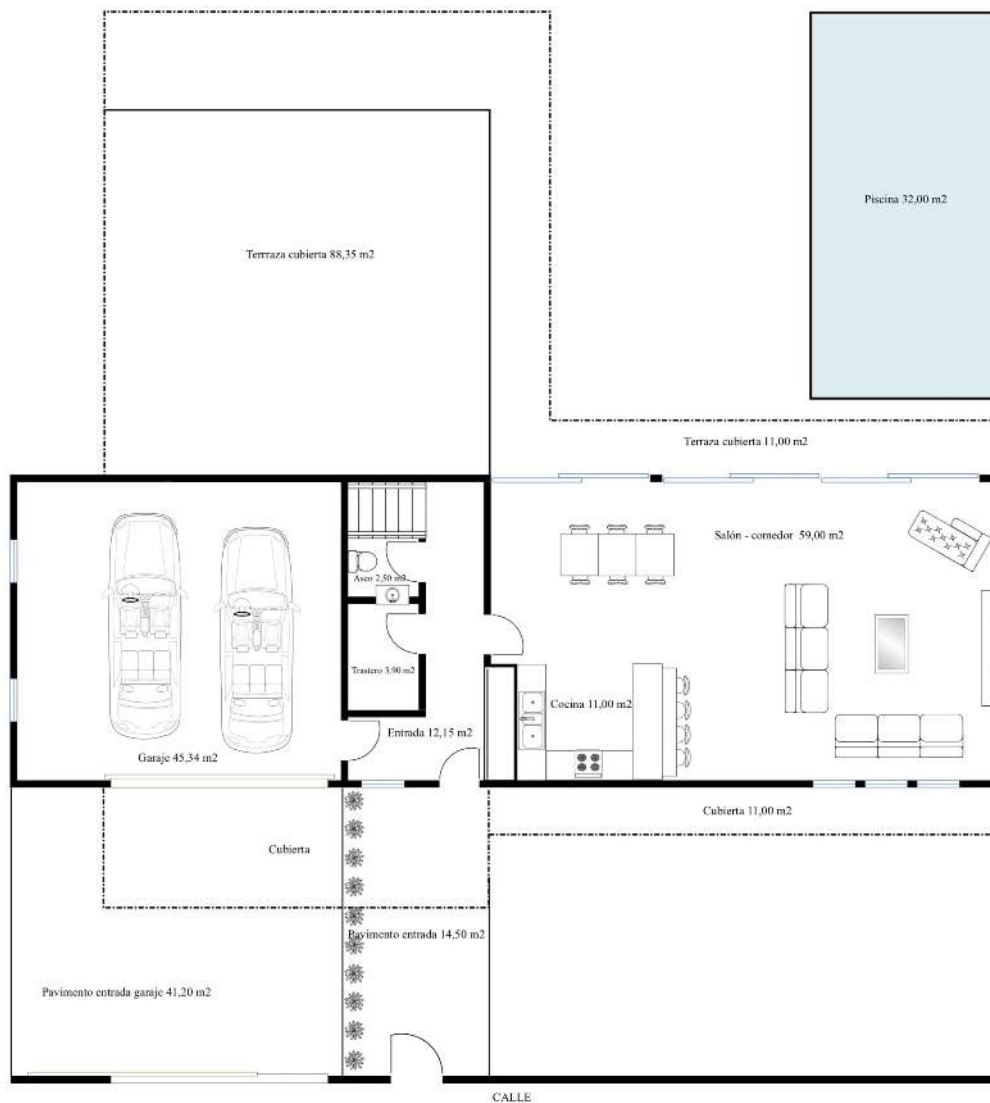
Built area	160,67 m2
Covered terraces	81,00 m2
Pool	32,00 m2
Chill-out/BBQ area	15,00 m2

Built area	159,54 m2
Covered terrace	35,70 m2
Uncovered terraces	81,00 m2

Built area 160,67 m²

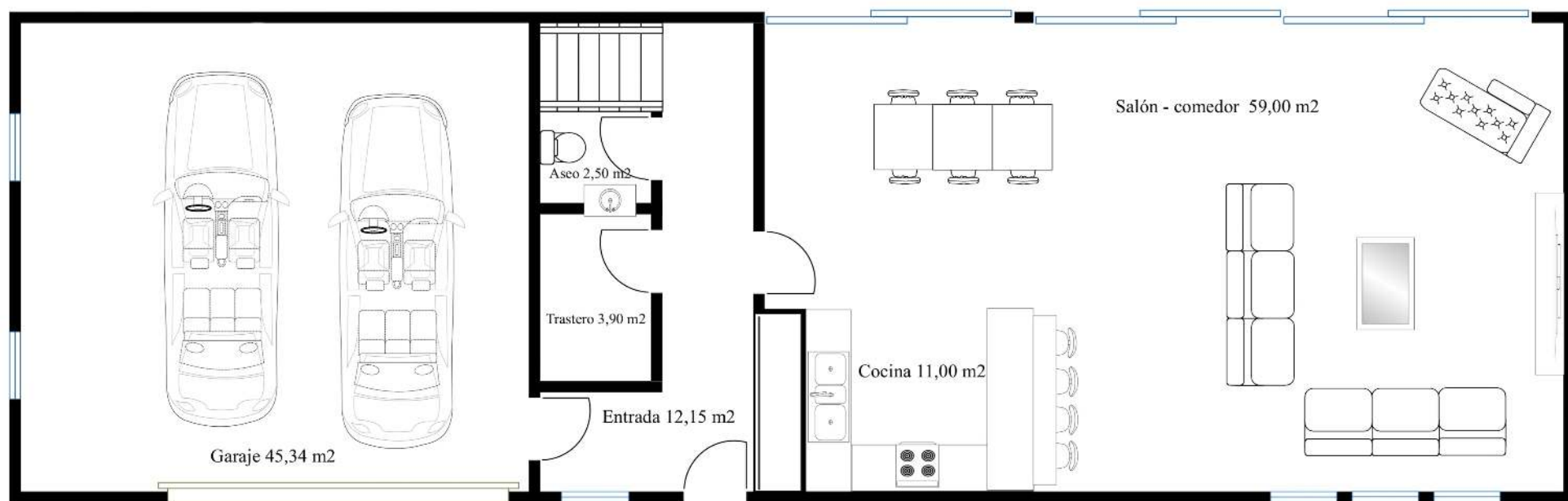
All plans, photos and designs here reproduced are the sole property of the developer and cannot be used in any way, copied, sold or transferred to other developers.
Some elements shown on the pictures may be listed as optional.

GROUND FLOOR VILLA 344



All plans, photos and designs here reproduced are the sole property of the developer and cannot be used in any way, copied, sold or transferred to other developers.
Some elements shown on the pictures may be listed as optional.

GROUND FLOOR VILLA 344

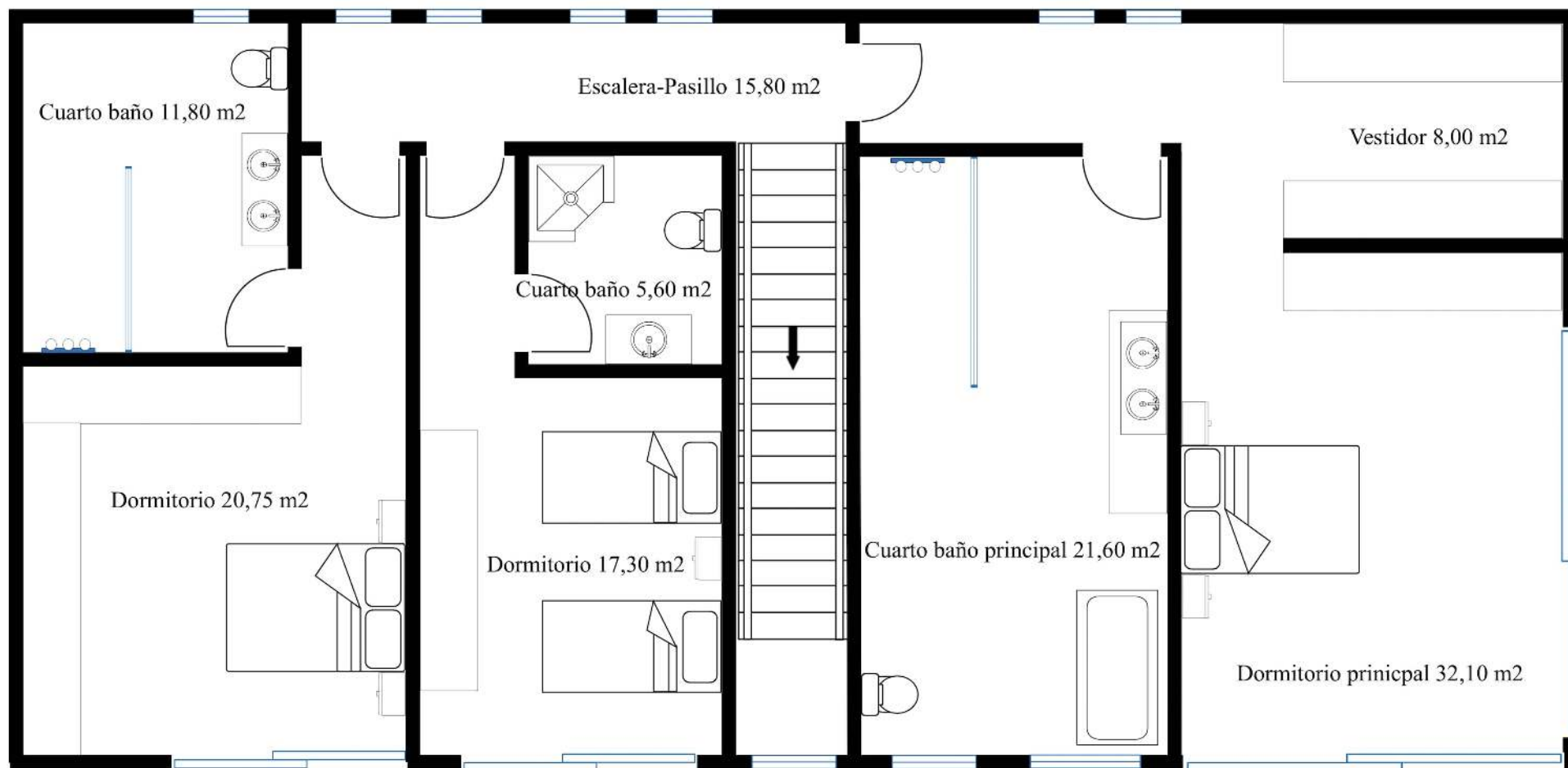


FIRST FLOOR VILLA 344



All plans, photos and designs here reproduced are the sole property of the developer and cannot be used in any way, copied, sold or transferred to other developers.
Some elements shown on the pictures may be listed as optional.

FIRST FLOOR VILLA 344



QUALITY SPECIFICATIONS VILLA 344

FOUNDATION AND STRUCTURE

- Reinforced concrete structural floor
- Two way reinforced concrete slab, with pillars and beams, according to the European and Spanish regulations

ROOF AND TERRACES

- Inverted flat roof with gravel and not walkable
- Insulation and waterproofing according to the regulations
- Glass balustrade, with hidden aluminum profile on the first floor

EXTERIOR WALLS

- Brick cavity wall with partly insulated cavity with extruded polystyrene
- Exterior wall rendering and finished according to design
- The pillars will be covered to break the thermal bridge

PARTITIONS

- Double hollow ceramic bricks, finished with fine gypsum plaster work and mat paint

EXTERIOR CARPENTRY

- Thermal break aluminum profiles by Cortizo or similar
- Laminated double glass CLIMALIT
- Sliding doors with invisible track in the floor side

PLOT ENCLOSURE

- Street front & side: 1,50m wall + 0,50m perforated mesh or glass
- End of the plot: metal fence complete with rigid welded mesh, posts and clamps, 2 meters high

HEATING AND AIR CONDITIONING

- LG or Mitshubishi air conditioning – cold/warm
- Or heat pump from Calorax or Panasonic
- Underfloor heating in bathrooms

FLOORS

- Interior floors: porcelain tiles from Grespania
- Exterior floors: porcelain anti-slip tiles from Grespania

SKIRTING BOARD

- According to the floor design

BATHROOM WALLS AND FLOORS

- Porcelain tiles from Grespania

ACCESS DOOR AND GARAGE DOOR

- Security entrance door, automated garage door and automated entrance gate from Hörmann

INTERNAL DOORS

- Standard height white lacquered internal doors

WARDROBE

- Wardrobe: white lacquered sliding doors with finger pull.
- Dressings: without doors

SWITCHES AND SOCKETS

- Niessen, Niko, Tensa or similar

QUALITY SPECIFICATIONS & EXTRAS TO CUSTOMIZE VILLA 344

LIGHTING

- Downlight LED on ceilings; in bathrooms, kitchens and corridors
- Cove lighting in the livingroom and master bedroom

SWIMMING POOL

- Swimming pool with sweet or salt-water system
- Pool finished in white or blue vitrified mosaic with exterior shower

GARDEN

- Grass and automated irrigation system

SECURITY SYSTEM

- Pre-installed alarm – Video intercom

KITCHEN

- Low and high units lacquered with fingerpull, Different colours av.
- Quartz or Silestone worktop and splashback finished with porcelain tiles or glass
- Siemens, Miele, Bosch, Balay appliances; vitroceramic, oven, microwave, dishwasher, fridge / freezer, ceiling extractor
- Washing machine and dryer
- Built-in wine cooler

BATHROOMS

- Sanitaryware from Villeroy, Roca or similar
- Suspended hung toilets
- Walk-in showers with tempered glass of 10mm
- Taps: Hansgrohe or similar

CHILL OUT

- Included

HEATED POOL

- Included

AUTOMATIC POOL COVER

- Price on request

PNEUMATIC ELEVATOR – WHEELCHAIR FRIENDLY

- From 25.000,00 €

EXTERIOR JACUZZI

- From 10.000,00 €

WALLS AND FLOORS FROM PORCELANOSA

- From 60,00 € p/m2

ALL SANITARYWARE FROM PORCELANOSA

- Price will depend on chosen series

KITCHEN FROM PORCELANOSA

- From 25.000,00 €

VISSMAN UNDERFLOOR HEATING SYSTEM FULL VILLA

- From €25.000,00 €

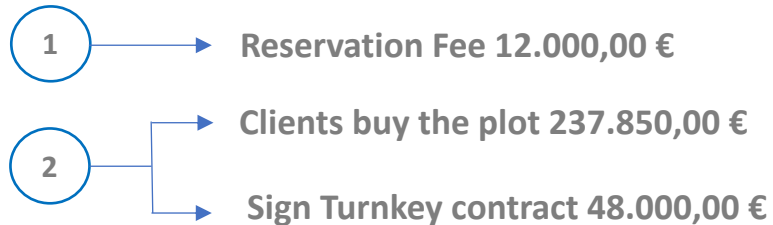
POOL WITH SALT-WATER SYSTEM

- Included

BASEMENT

- From 700,00 € p/m2

PAYMENT TERMS VILLA 344



Partial payment towards the architects project and plot

Payment of 237.850,00 € € in the Public Notary

Payment includes;

- * Plot in clients name
- * Full project in clients name
- * Licenses in client name
- * Cleaning and preparation of the plot
- * Topograhly and geological study
- * 3D Images
- * Quantity surveyor study
- * Health and Security study

Once the project is approved by the client, project will be presented in name of the client to the townhall for approval, client pays 25.000,00 €

All payments will be made against completed construction demonstrated by building certificates issued and signed by the architects.

Construction completion time of 8 – 10 months. Once your villa is finished, we manage the final utility connections and first occupation license.

From 995.000,00 € - VAT not included

BENEFITS BUYING OFF-PLAN

BENEFITS BUYING OFF-PLAN

- Buy 40% under the market value
- Possibility to change the internal distribution
- Possibility to change the outside appearance
- You can decide the finishings
- We take care of the entire project to give you peace of mind

TAXES

The obligatory taxes are;

- On the plot 10% VAT
- On the project 21% VAT
- On the construction cost 10% VAT

GUARANTEES

- 10 years on the structure
- 3 years on the installations
- 2 years on the finishings

NO ADDITIONAL COST

There are no additional costs, everything is included and covered

The purchase price we have given you includes;

- Construction license
- First occupation license
- Utility connections and final connection fee
- Independent quality control Company
- Decennial insurance fees
- Laboratory tests
- Quantity surveyors
- Health and security supervision
- Architect studies

SUSTAINABLE AND EFFICIENT ARCHITECTURE

We can define efficiency as the relationship between the resources used for an end and the achievements made. It is understood that efficiency occurs when less resources are used to achieve the same objective, or on the contrary, when more objectives are achieved with the same or fewer resources.

The range of constructive solutions with our system allows to reduce the resources used in construction (labor, auxiliary means, etc.) obtaining, in a shorter term, constructions of greater quality and comfort.

On the other hand, the obtaining of better thermal qualities and the elimination of thermal bridges in the enclosures supposes the improvement of the energetic efficiency of the buildings.

A sustainable architecture needs an effective and moderate constructive process in the use of natural resources.

Our system is solved with great fluidity, simplifying the construction process without generating debris and limiting the use of machinery, which reduces CO2 emissions.



GRESPANIA WHO ARE GRESPANIA?

GRESPANIA

Is an international ceramic manufacturing company, producing collections which boast both innovative technical properties as well as innovative cutting-edge designs. A combination of ongoing investments in further improving the manufacturing process, continual adaption to latest advances in design, and a permanent concern for the “good of the environment” have all helped “stamp” the Grespania brand as a global market leader for the past 40 years.



The possibilities within the Grespania product range are endless; from ideas for those seeking a touch of personality and unique style for her homes, to technical solutions for professionals involved in the most exciting building projects.

Grespania has three factories all equipped with state-of-the-art technology and the most advanced process for the production of porcelain floor tiles, with body wall tiles and large format porcelain slabs up to 1230x360 in size and in varying thickness as well as slabs in 10,50 mm and 12 mm thickness, ideal for kitchen worktops, tables and wardrobes. In addition to its production facilities, Grespania has two services centers in Santiago de Compostela, Granada, and Barcelona in Spain. The company has also 5 subsidiaries companies serving as distribution hubs in strategic European countries; France, the Netherlands, Poland and the UK.

Today, close to 40 years on, Grespania continues to build and look towards the future.

ECOLOGICAL COMMITMENT

Grespania has demonstrated a constant concern for the environment throughout his history. One of this company’s strongest commitments, therefore, is to develop strategies aimed at minimizing the environmental impact of its production process while increasing its positive effect on society.

PORCELANOSA GRUPO

WHO ARE PORCELANOSA?

PORCELANOSA GRUPO IS PRESENT IN ABOUT 150 COUNTRIES

PORCELANOSA produces high quality equipment for bathrooms, kitchens, dressing rooms, tiles and much more.

PORCELANOSA Group is today a major reference in both the Spanish and the International market. Its consolidated position has been built up on values such as innovation and quality, but specially the trust placed in its large human capital, made up of almost 5,000 skilled professionals, and its concern for its stakeholders and the environment.

With over 45 years of experience, PORCELANOSA Group is present in almost 150 countries worldwide. This success is the result of a unique business model based on a strong corporate strategy. According to a study published by the consultancy Pricewaterhouse Coopers and the Financial Times.

PORCELANOSA is one of Spain's most reputable companies in the international scene and is also considered by consumers to be a strong and solid company, as reflected in a study carried out by the Reputation Institute. Diversifying production has played a key role in the growth of a business group that started off manufacturing a single product: ceramic tiles. Today, the Group's eight firms offer a vast selection of products ranging from kitchen and bathroom equipment to high-tech materials and state-of-the-art building solutions for contemporary architecture.

ECOLOGICAL COMMITMENT

The concern for the care of the environment and the preservation of the environment have been a constant priority for the PORCELANOSA Group since its foundation. The sustainability of our lifestyle and its necessary balance with the environment requires concrete actions and tangible actions. PORCELANOSA Grupo, anticipating this new dynamic, has been improving its production system for more than 30 years, in order to minimize its impact on the environment.

PORCELANOSA Grupo's actions in the field of the environment go beyond the optimization of production systems, our effort is also focused on the design of products that contribute to reducing the consumption of water and energy in homes, such as taps with limiters flow or construction systems that allow the reduction of energy consumption in the heating of buildings.



By appointment to
HRH The Prince of Wales
Manufacturer and Distributor of
Ceramic Tiles and Building Products
PORCELANOSA Group Limited

PORCELANOSA Grupo

REGULATIONS & CERTIFICATION

GUARANTEES ACCORDING TO CURRENT LEGISLATION

LOE & CTE

POST SALES SERVICE

CERTIFICATIONS

- CE Marking
- BRE Certification

Thermal and acoustic tests
fireproof according to
UNE standards

GUARANTEES

10 years on structure
3 years on installations
2 years on finishings'

BRE CERTIFICATION LIMITED

CI/SIB	81	(28.6)	Hh2	(E4)
--------	----	--------	-----	------

CERTIFICATE NUMBER 129/07
DATE OF ISSUE
December 2007

	
CRUPE TECHNOLOGY SYSTEMS, S.L. Avenida de las Américas nº 3 - Edificio América Planta 3ª 29002 MÁLAGA - España	
10 UNE-EN 13279-1:2009	
Insulterm 400 compuesto de mortero aligerado para construcción BS/7/2	
Resistencia al fuego:	E: 240 min
Aislamiento directo al ruido aéreo:	R_a : 51 dB R_w : 63 dB
Resistencia térmica:	0,138 W/m²K